

Activity ID	Activity Name	OD	RD	Start	Finish	% Comp	Total Float	2014				
								Qtr 3				
								Jun	Jul	Aug	Sep	
HK/2009/01 - Works Programme Rev.6D (Data Date: 20-Jun-14)												
Key Dates (Contractual)												
Major Works												
KD-0400B	Completion of Outstanding Works for Section 4 - Salt Watermains	0	0		20-Jun-14*	0%	-629					
Key Dates (Forecast Completion)												
Major Works												
KD-0405B	Completion of Outstanding Works for Section 4 - Salt Watermains & Works in Area 3	0	0		02-Sep-14	0%	-704					
KD-0805	Completion of Section 8 of Works - Works in Area 6	0	0		09-Aug-14	0%	87					
Preliminaries												
Method Statement & Design (Major) Approval by AECOM												
PRE-2000G	D-Wall Construction for CWB Tunnel (Stage 3)	60	1	05-Nov-13 A	20-Jun-14*	0%	-181					
PRE-2030B	ELS for CWB Stage 2	30	1	20-Mar-14 A	18-Jul-14	0%	758					
PRE-2030C	ELS for CWB Stage 3	30	0	19-Apr-14 A	18-Aug-14	100%	-156					
Statutory / Authority Approval												
PRE-3050B	ELS for CWB Tunneling Works Stage 2 (GEO)	28	28	21-Jun-14*	18-Jul-14	0%	-376					
PRE-3050C	ELS for CWB Tunneling Works Stage 3 (GEO)	28	28	21-Jul-14	17-Aug-14	0%	-156					
PRE-3050D	ELS for CWB Tunneling Works Stage 1b (GEO) for Bottom Up	28	1	20-Apr-11 A	20-Jun-14	0%	-376					
Watermains Connection Submission Approval by WSD/Stakeholders												
PRE-3200C	Salt Water Mains (S3)	28	28	01-Sep-14*	28-Sep-14	0%	0					
PRE-3200D	Salt Water Mains (S8)	28	28	20-Jun-14*	17-Jul-14	0%	-384					
PRE-3200E	Salt Water Mains (S9)	28	28	20-Jun-14*	17-Jul-14	0%	-671					
PRE-3200O	Cooling Watermains (BF)	28	28	01-Sep-14*	28-Sep-14	0%	0					
PRE-3200P	Cooling Watermains (BG)	28	28	01-Sep-14*	28-Sep-14	0%	0					
PRE-3200Q	Cooling Watermains (BI)	28	28	01-Sep-14*	28-Sep-14	0%	0					
Contractor's Design (CWB Diaphragm Wall)												
PRE-4020	Contractor's Detailed Design	30	1	09-Jul-11 A	20-Jun-14	40%	726					
PRE-4030	AECOM's and GEO's approval on Detailed Design	60	60	21-Jun-14	19-Aug-14	0%	726					
Contractor's Design (PS1.94)												
PRE-5100C	Approval of ICCP of Cross-Harbour Mains - by AECOM & Relevant Authorities	28	0	04-Mar-11 A	20-Jun-14	100%	787					
TTA Implementation and Completion Summary Milestone												
Zone A2 (At Convention Avenue)												
TTAM-A2-1040D	TTA Completion - Zone A2-4B	0	0		02-Aug-14	0%	-673					
Zone A3 (At Fenwick Pier Street)												
AA1030	TTA Completion - Combination of Zone A3-5D & A3-4D (Sewer)	0	0		20-Jun-14	0%	85					
AA1040	TTA Implementation - Zone A3-2C (Sewer)	0	0	20-Jun-14*		0%	85					
AA1050	TTA Completion - Zone A3-2C (Sewer)	0	0		31-Jul-14	0%	745					
AA1060	TTA Implementation - Zone A3-2D (Sewer)	0	0	20-Jun-14		0%	85					
AA1070	TTA Completion - Zone A3-2D (Sewer)	0	0		31-Jul-14	0%	745					
TTAM-A3-1090B	TTA Completion - Zone A3-5C - Salt Water	0	0		29-Aug-14	0%	-700					
Zone A4 (At Convention Avenue)												
TTAM-A4-1020D	TTA Completion - Zone A4-2B (Night Works)	0	0		29-Jun-14	0%	-690					
TTAM-A4-1120A	TTA Implementation - Zone A4-2C	0	0	30-Jun-14		0%	-690					
TTAM-A4-1120B	TTA Completion - Zone A4-2C	0	0		13-Aug-14	0%	-684					
Zone A5 (At Harbour Road)												
TTAM-A5-1050B	TTA Completion - Zone A5-6	0	0		27-Aug-14	0%	-698					
Area X3 (Fleming Road b/w Harbour Road & Convention Avenue)												
TTAM-X3-1000B	TTA Completion - Zone X1-1	0	0		03-Jul-14	0%	107					
TTAM-X3-1000D	TTA Completion - Zone X1-1A	0	0		26-Jun-14	0%	780					
TTAM-X3-1010B	TTA Completion - Zone X1-2	0	0		23-Jul-14	0%	753					
TTAM-X3-1020B	TTA Completion - Zone X1-3	0	0		23-Jul-14	0%	753					
Zone C (Expo Drive East)												
TTAM-C1-1000B	TTA Completion - Zone C1-1	0	0		03-Jul-14	0%	27					
TTAM-C1-1010C	TTA Implementation - Zone C1-2A	0	0	04-Jul-14		0%	27					
TTAM-C1-1010D	TTA Completion - Zone C1-2A	0	0		02-Aug-14	0%	743					

■ Remaining Work ■ Summary Bar
■ Actual Work
■ Summary Bar
■ Critical Remaining Work
◆ Milestone

CEDD CONTRACT NO. HK/2009/01
 Wan Chai Development Phase II - Central-Wan Chai Bypass at HKCEC (Contract 1)
WORKS PROGRAMME Rev.6C - 3 Month Programme starting from 20-Jun-14

Activity ID	Activity Name	OD	RD	Start	Finish	% Comp	Total Float	2014			
								Jun	Jul	Aug	Sep
S6C-1000	Zone C2-2 - CHBI (7m)	45	34	20-Jan-14 A	23-Jul-14	100%	-8	Zone C2-2 - CHBI (7m)			
S6C-1020A	Zone C1-2A - CHBI (18m)	30	30	04-Jul-14	02-Aug-14	0%	42	Zone C1-2A - CHBI (18m)			
S6C-1600	Zone C3-1 - CHBI (16m) Test and Connection Point	60	60	24-Jul-14	21-Sep-14	0%	-8				
Section 8 of the Works - Works in Area 6 (Utilities other than Watermains in Fenwick Pier Street)											
Sewerage Works											
AA1170	Relocation of existing light pole by Others	0	0		20-Jun-14*	0%	787	◆ Relocation of existing light pole by Others			
S8-1040	Zone A3-2C - 9 m pipe	23	35	20-Jun-14	31-Jul-14	0%	71	Zone A3-2C - 9 m pipe			
S8-1050	Zone A3-2D - 8m pipe & Connection with downstream existing manhole	23	35	20-Jun-14	31-Jul-14	0%	71	Zone A3-2D - 8m pipe & Connection with down			
S8-2500	CCTV Survey	1	1	01-Aug-14	01-Aug-14	0%	71	CCTV Survey			
S8-3000	Zone A2-1 - Connection with Upstream Existing Manhole & Abandon Used Pipe	7	7	02-Aug-14	09-Aug-14	0%	71	Zone A2-1 - Connection with Upstream			
Section 9 of the Works - Remaindar of the Works											
Box Culvert Construction											
S9-1030	Construction of Transition Chamber for Existing Box Culvert Diversion	30	30	19-Jul-14	22-Aug-14	0%	-186	Construction of Transition			
S9-1040	Pre-bored H Piles (8 nos) for Box Culvert	40	40	10-Jun-14 A	06-Aug-14	0%	-186	Pre-bored H Piles (8 nos) for Box Culvert			
S9-1040A	Installation of Sheet Pile for Bay7	45	45	23-Aug-14	06-Oct-14	0%	-234				
S9-1040B	Installation of Sheet Pile for Bay 2	45	45	23-Aug-14	06-Oct-14	0%	-234				
Waterworks in Area 9											
Salt Water Mains (S3, S5A & S5B)											
S9-5500A	Zone X1-1 - S3 (5m)	0	0		03-Jul-14	0%	107	◆ Zone X1-1 - S3 (5m)			
S9-5500B	Zone X1-2 - S3 (5m)	0	0		23-Jul-14	0%	167	◆ Zone X1-2 - S3 (5m)			
S9-5500C	Zone X1-3 - S3 (5m)	0	0		23-Jul-14	0%	167	◆ Zone X1-3 - S3 (5m)			
Fresh Water Mains (F3)											
AA1180	Zone X1-1 - F3 (5m)	0	0		03-Jul-14	0%	187	◆ Zone X1-1 - F3 (5m)			
AA1190	Zone X1-2 - F3 (5m)	0	0		23-Jul-14	0%	167	◆ Zone X1-2 - F3 (5m)			
AA1200	Zone X1-3 - F3 (5m)	0	0		23-Jul-14	0%	167	◆ Zone X1-3 - F3 (5m)			
Section 13 of the Works - Works in Area 11 (other than Section 11)											
S13-3000	Completion of Backfilling to +5.0mPD	0	0		20-Jun-14	0%	253	◆ Completion of Backfilling to +5.0mPD			
Section 9A of the Works - Landscape Softworks in Area 9											
S9A-1000	Transplanting at Expo Drive East and Convention Avenue Junction	180	180	20-Jun-14	16-Dec-14	0%	242				

█ Remaining Work █ Summary Bar
█ Actual Work
█ Summary Bar
█ Critical Remaining Work
◆ Milestone

CEDD CONTRACT NO. HK/2009/01
 Wan Chai Development Phase II - Central-Wan Chai Bypass at HKCEC (Contract 1)
WORKS PROGRAMME Rev.6C - 3 Month Programme starting from 20-Jun-14

Activity ID	Activity Name	Rem Dur	Start	Finish	Late Start	Late Finish	Total Float	2014															
								July				August				September				October			
								23	30	07	14	21	28	04	11	18	25	01	08	15	22	29	06
3MRP - Jul 2014 to Oct 2014																							
01 - CONTRACT DATES																							
01.2 - Possession of Site																							
0120-3300	Possession to Portion X11A	0	02-Sep-14*		02-Sep-14		0	◆ Possession to Portion X11A															
02 - PRE-CONSTRUCTION WORKS																							
02.2 - Contractor's Submission																							
0220-1580	Noise Enclosure/Barrier - Steel Material No Adverse Comment	0	02-Jun-14 A	30-Jun-14 A	11-Aug-19	11-Aug-19		Noise Enclosure/Barrier - Steel Material No Adverse Comment															
02.3 - Method Statement / Shop Drawings																							
0230-1590	MS Bridge F1A/F2A Int. Noise Semi Enclosure - ER Review / Comment	0	26-May-14 A	11-Jul-14 A	30-Nov-15	30-Nov-15		MS Bridge F1A/F2A Int. Noise Semi Enclosure - ER Review / Comment															
0230-1600	MS Bridge F1A/F2A Int. Noise Semi Enclosure - Resubmission	0	01-Jun-14 A	11-Jul-14 A	30-Nov-15	30-Nov-15		MS Bridge F1A/F2A Int. Noise Semi Enclosure - Resubmission															
0230-1610	MS Bridge F1A/F2A Int. Noise Semi Enclosure - No Adverse Comment	12	12-Jul-14 A	31-Jul-14	30-Nov-15	11-Dec-15	498	MS Bridge F1A/F2A Int. Noise Semi Enclosure - No Adverse Comment															
0230-1420	MS Permanent Noise Barrier Cantilever - Submission	6	10-Feb-14 A	25-Jul-14	26-Aug-14	31-Aug-14	37	MS Permanent Noise Barrier Cantilever - Submission															
0230-1430	MS Permanent Noise Barrier Cantilever - ER Review & Comment	12	26-May-14 A	06-Aug-14	01-Sep-14	12-Sep-14	37	MS Permanent Noise Barrier Cantilever - ER Review & Comment															
0230-1440	MS Permanent Noise Barrier Cantilever - Resubmission	12	10-Jun-14 A	18-Aug-14	13-Sep-14	24-Sep-14	37	MS Permanent Noise Barrier Cantilever - Resubmission															
0230-1450	MS Permanent Noise Barrier Cantilever - No Adverse Comment	15	19-Aug-14	02-Sep-14	25-Sep-14	09-Oct-14	37	MS Permanent Noise Barrier Cantilever - No Adverse Comment															
0230-1820	MS Bridge Demolition Pier E3 to P20 - Submission	18	20-Jul-14 A	06-Aug-14	28-Jul-14	14-Aug-14	8	MS Bridge Demolition Pier E3 to P20 - Submission															
0230-1830	MS Bridge Demolition Pier E3 to P20 - ER Review & Comment	12	07-Aug-14	18-Aug-14	15-Aug-14	26-Aug-14	8	MS Bridge Demolition Pier E3 to P20 - ER Review & Comment															
0230-1840	MS Bridge Demolition Pier E3 to P20 - Resubmission	12	13-Aug-14	24-Aug-14	21-Aug-14	01-Sep-14	8	MS Bridge Demolition Pier E3 to P20 - Resubmission															
0230-1850	MS Bridge Demolition Pier E3 to P20 - No Adverse Comment	18	25-Aug-14	11-Sep-14	02-Sep-14	19-Sep-14	8	MS Bridge Demolition Pier E3 to P20 - No Adverse Comment															
0230-1740	MS Temporary Bridge TB - Submission	28	01-Aug-14*	28-Aug-14	28-Aug-14	24-Sep-14	27	MS Temporary Bridge TB - Submission															
0230-1750	MS Temporary Bridge TB - ER Review & Comment	18	29-Aug-14	15-Sep-14	25-Sep-14	12-Oct-14	27	MS Temporary Bridge TB - ER Review & Comment															
0230-1760	MS Temporary Bridge TB - Resubmission	18	16-Sep-14	03-Oct-14	13-Oct-14	30-Oct-14	27	MS Temporary Bridge TB - Resubmission															
0230-1770	MS Temporary Bridge TB - ER Approval	28	04-Oct-14	31-Oct-14	31-Oct-14	27-Nov-14	27	MS Temporary Bridge TB - ER Approval															
02.4 - Contractor's Design and Build Items																							
0240-1046	Temp Bridge "TD" - Tower Fabrication Pier F5, F6 and F7	0	01-Jun-14 A	10-Jul-14 A	28-Jul-14	28-Jul-14		Temp Bridge "TD" - Tower Fabrication Pier F5, F6 and F7															
0240-1047	Temp Bridge "TD" - Beam Fabrication Pier F5 to F8	0	01-Jun-14 A	14-Jul-14 A	19-Jul-14	19-Jul-14		Temp Bridge "TD" - Beam Fabrication Pier F5 to F8															
0240-1048	Temp Bridge "TD" - Tower Fabrication Pier F11, F12, F13 and F14	0	27-May-14 A	09-Jul-14 A	31-Jul-14	31-Jul-14		Temp Bridge "TD" - Tower Fabrication Pier F11, F12, F13 and F14															
0240-1049	Temp Bridge "TD" - Beam Fabrication Pier F10 to F15	0	24-May-14 A	14-Jul-14 A	31-Jul-14	31-Jul-14		Temp Bridge "TD" - Beam Fabrication Pier F10 to F15															
0240-1110	Int. Noise Enclosure Structural Design - ER Review/Resubmission	14	17-Jan-14 A	02-Aug-14	28-Nov-15	11-Dec-15	496	Int. Noise Enclosure Structural Design - ER Review/Resubmission															
0240-1111	Int. Noise Enclosure Structural Design - No Adverse Comment	28	03-Aug-14	30-Aug-14	12-Dec-15	08-Jan-16	496	Int. Noise Enclosure Structural Design - No Adverse Comment															
0240-1113	Int. Noise Enclosure Structural - Shop Drawings Bridge F1A/F2A	0	02-Jan-14 A	11-Jul-14 A	03-Sep-14	03-Sep-14		Int. Noise Enclosure Structural - Shop Drawings Bridge F1A/F2A															
0240-1115	Int. Noise Enclosure - Fabricate Column (32 nos.) Bridge F1A/F2A	0	14-Apr-14 A	08-Jul-14 A	03-Sep-14	03-Sep-14		Int. Noise Enclosure - Fabricate Column (32 nos.) Bridge F1A/F2A															
0240-1116	Int. Noise Enclosure - Fabricate Main Beam (32 nos.) Bridge F1A/F2A	0	14-Apr-14 A	10-Jul-14 A	03-Sep-14	03-Sep-14		Int. Noise Enclosure - Fabricate Main Beam (32 nos.) Bridge F1A/F2A															
0240-1117	Int. Noise Enclosure - Fabricate Temp. Column Bridge (32 nos.) F1A/F2A	0	14-Apr-14 A	11-Jul-14 A	03-Sep-14	03-Sep-14		Int. Noise Enclosure - Fabricate Temp. Column Bridge (32 nos.) F1A/F2A															
0240-1118	Int. Noise Enclosure - Fabricate Sec. Beam (240 nos.) Bridge F1A/F2A	0	14-Apr-14 A	09-Jul-14 A	03-Sep-14	03-Sep-14		Int. Noise Enclosure - Fabricate Sec. Beam (240 nos.) Bridge F1A/F2A															
0240-1132	Noise Barrier Structural - Shop Drawings	12	21-Mar-14 A	31-Jul-14	23-Aug-14	03-Sep-14	34	Noise Barrier Structural - Shop Drawings															
0240-1136	Noise Barrier Panel - Design ER Review/Resubmission	24	01-Mar-14 A	12-Aug-14	30-Jul-14	22-Aug-14	10	Noise Barrier Panel - Design ER Review/Resubmission															
0240-1137	Noise Barrier Panel - Design No Adverse Comment	28	13-Aug-14	09-Sep-14	23-Aug-14	19-Sep-14	10	Noise Barrier Panel - Design No Adverse Comment															
0240-1141	Noise Barrier Panel - Fabricate Type C Column (77 nos.)	36	25-Aug-14	29-Sep-14	04-Sep-14	09-Oct-14	10	Noise Barrier Panel - Fabricate Type C Column (77 nos.)															
0240-1142	Noise Barrier Panel - Fabricate Type B Column (25 nos.)	24	06-Sep-14	29-Sep-14	10-Oct-14	02-Nov-14	34	Noise Barrier Panel - Fabricate Type B Column (25 nos.)															
0240-1429	Noise Barrier Panel - Fabricate Beams (203 nos.)	48	06-Sep-14	23-Oct-14	22-Sep-14	08-Nov-14	16	Noise Barrier Panel - Fabricate Beams (203 nos.)															
0240-1143	Noise Barrier Panel - Fabricate Type A Column (38 nos.)	30	18-Sep-14	17-Oct-14	22-Oct-14	20-Nov-14	34	Noise Barrier Panel - Fabricate Type A Column (38 nos.)															
0240-1050	Temp Bridge "TB" Design - Prep & Submit	22	21-Feb-14 A	10-Aug-14	27-Jul-14	17-Aug-14	7	Temp Bridge "TB" Design - Prep & Submit															
0240-1060	Temp Bridge "TB" Design - ER review and comment	24	13-Aug-14 A	03-Sep-14	18-Aug-14	10-Sep-14	7	Temp Bridge "TB" Design - ER review and comment															

- Remaining Level of Effort
- Actual Level of Effort
- Actual Work
- Remaining Work
- Critical Remaining Work
- ◆ Milestone

Contract HY/2009/19

Three Month Rolling Programme (20 Jul to 19 Oct 2014)

3MRP

3MRP - Jul 2014 to Oct 2014

Page 1 of 10

Activity ID	Activity Name	Rem Dur	Start	Finish	Late Start	Late Finish	Total Float	2014															
								July				August				September				October			
								23	30	07	14	21	28	04	11	18	25	01	08	15	22	29	06
0514-1664	Tunnel Bay 22 Base Slab - Formwork/Prepare CJ	9	06-Oct-14	15-Oct-14	19-Nov-14	28-Nov-14	38																
0514-1666	Tunnel Bay 22 Base Slab - Concreting	2	16-Oct-14	17-Oct-14	29-Nov-14	01-Dec-14	38																
0514-1668	Tunnel Bay 22 Centre Wall - Remove Strut	6	18-Oct-14	24-Oct-14	02-Dec-14	08-Dec-14	38																
0514-1716	Tunnel Bay 24 Base Slab - Falsework/Formwork	9	23-Sep-14	04-Oct-14	01-Nov-14	11-Nov-14	32																
0514-1718	Tunnel Bay 24 Base Slab - Rebar Fixing	9	06-Oct-14	15-Oct-14	12-Nov-14	21-Nov-14	32																
0514-1720	Tunnel Bay 24 Base Slab - Formwork/Prepare CJ	9	13-Oct-14	22-Oct-14	19-Nov-14	28-Nov-14	32																
0514-1772	Tunnel Bay 26 Base Slab - Falsework/Formwork	9	26-Sep-14	08-Oct-14	01-Nov-14	11-Nov-14	29																
0514-1774	Tunnel Bay 26 Base Slab - Rebar Fixing	9	09-Oct-14	18-Oct-14	12-Nov-14	21-Nov-14	29																
0514-1776	Tunnel Bay 26 Base Slab - Formwork/Prepare CJ	9	16-Oct-14	25-Oct-14	19-Nov-14	28-Nov-14	29																
05.2 - Cut & Cover Tunnel Ch 4932-5149																							
05.2.3 - ELS																							
0524-2889	Pump Sump - Excavation & Lateral Support	0	22-Apr-14 A	19-Jul-14 A	04-Sep-14	04-Sep-14																	
0524-2885	Pump Sump - Structure - Base Slab	9	21-Jul-14	30-Jul-14	04-Sep-14	15-Sep-14	39																
0524-2890	Pump Sump - Structure - Wall	9	31-Jul-14	09-Aug-14	16-Sep-14	25-Sep-14	39																
05.2.4 - Tunnel Structure																							
0524-3015	Bay 1 Tunnel Vertical Wall	7	25-Aug-14 A	26-Aug-14	07-Oct-14	14-Oct-14	39																
0524-3025	Bay 1 Tunnel False Works	6	27-Aug-14	02-Sep-14	15-Oct-14	21-Oct-14	39																
0524-3035	Bay 1 Tunnel OHVD Slab	8	03-Sep-14	12-Sep-14	22-Oct-14	30-Oct-14	39																
0524-3045	Bay 1 Tunnel Roof Slab	12	13-Sep-14	26-Sep-14	31-Oct-14	13-Nov-14	39																
0524-3115	Bay 2 Tunnel Vertical Wall	7	11-Aug-14	18-Aug-14	26-Sep-14	06-Oct-14	39																
0524-3125	Bay 2 Tunnel False Works	6	19-Aug-14	25-Aug-14	01-Nov-14	07-Nov-14	61																
0524-3135	Bay 2 Tunnel OHVD Slab	8	26-Aug-14	03-Sep-14	08-Nov-14	17-Nov-14	61																
0524-3145	Bay 2 Tunnel Roof Slab	12	04-Sep-14	18-Sep-14	18-Nov-14	01-Dec-14	61																
0524-3472	Remove Temp. Stock Pile on top of Tunnel	18	05-Sep-14	26-Sep-14	24-Oct-14	13-Nov-14	39																
0524-3474	Waterproofing Preparation + Tunnel Roof Remedial Works	15	27-Sep-14	16-Oct-14	14-Nov-14	01-Dec-14	39																
0524-3365	Waterproof Top Slab Bay 1 to Bay 4	12	17-Oct-14	30-Oct-14	02-Dec-14	15-Dec-14	39																
0524-3475	Waterproof Top Slab Bay 5 to Bay 9	12	17-Oct-14	30-Oct-14	02-Dec-14	15-Dec-14	39																
0524-3685	Waterproof Top Slab Bays 12 and 13	12	17-Oct-14	30-Oct-14	02-Dec-14	15-Dec-14	39																
05.2.5 - Road & Miscellaneous Works																							
0525-2890	Tunnel Road Drainage (excl vent bldg)	45	27-Sep-14	20-Nov-14	05-Dec-14	28-Jan-15	57																
06 - SECTION 3 OF THE WORKS																							
06.1 - Westbound - Pier 29-34																							
0610-2126	Pier 29-3 Bored Pile (Normal)	18	21-Jul-14	09-Aug-14	23-Oct-14	12-Nov-14	78																
06.2 - Box Culvert U1																							
0620-2632	1350mm Drainage MH 9-P to MH 3-1 Stage 1 - Sheet Pile	4	20-Mar-14 A	24-Jul-14	28-Oct-14	31-Oct-14	82																
0620-2633	1350mm Drainage MH 9-P to MH 3-1 Stage 1 - Trench Excav	4	02-Apr-14 A	29-Jul-14	01-Nov-14	05-Nov-14	82																
0620-2634	1350mm Drainage MH 9-P to MH 3-1 Stage 1 - Pipe Laying	6	30-Jul-14	05-Aug-14	06-Nov-14	12-Nov-14	82																
0620-2635	1350mm Drainage MH 9-P to MH 3-1 Stage 1 - Backfill/Extract Sheet Pile	9	11-Aug-14	20-Aug-14	13-Nov-14	22-Nov-14	78																
0620-2636	1350mm Drainage MH 9-P to MH 3-1 Stage 2 - Remove Pavement	7	21-Aug-14	28-Aug-14	24-Nov-14	01-Dec-14	78																
0620-2637	1350mm Drainage MH 9-P to MH 3-1 Stage 2 - Sheet Pile	12	29-Aug-14	12-Sep-14	02-Dec-14	15-Dec-14	78																
0620-2638	1350mm Drainage MH 9-P to MH 3-1 Stage 2 - Trench Excav	9	13-Sep-14	23-Sep-14	16-Dec-14	26-Dec-14	78																
0620-2639	1350mm Drainage MH 9-P to MH 3-1 Stage 2 - Pipe Laying	6	24-Sep-14	30-Sep-14	27-Dec-14	03-Jan-15	78																
0620-2641	1350mm Drainage MH 9-P to MH 3-1 Stage 2 - Backfill/Extract Sheet Pile	7	03-Oct-14	10-Oct-14	05-Jan-15	12-Jan-15	78																
0620-2642	1500mm Drainage MH 3-1 to MH 3-2 - Sheet Pile	12	29-Aug-14	12-Sep-14	17-Dec-14	31-Dec-14	91																

- █ Remaining Level of Effort
- █ Actual Level of Effort
- █ Actual Work
- █ Remaining Work
- █ Critical Remaining Work
- ◆ Milestone

Contract HY/2009/19

Three Month Rolling Programme (20 Jul to 19 Oct 2014)

3MRP

3MRP - Jul 2014 to Oct 2014

Activity ID	Activity Name	Rem Dur	Start	Finish	Late Start	Late Finish	Total Float	2014																
								July					August				September				October			
								23	30	07	14	21	28	04	11	18	25	01	08	15	22	29	06	13
0620-2643	1500mm Drainage MH 3-1 to MH 3-2 - Trench Excav	9	24-Sep-14	06-Oct-14	02-Jan-15	12-Jan-15	82	1500mm Drainage MH 3-1 to MH 3-2 - Trench Excav																
0620-2644	1500mm Drainage MH 3-1 to MH 3-2 - Pipe Laying	6	11-Oct-14	17-Oct-14	13-Jan-15	19-Jan-15	78	1500mm Drainage MH 3-1 to MH 3-2 - Pipe Laying																
0620-2645	1500mm Drainage MH 3-1 to MH 3-2 - Construct MH 3-1	12	18-Oct-14	31-Oct-14	20-Jan-15	02-Feb-15	78	1500mm Drainage MH 3-1 to MH 3-2 - Construct MH 3-1																
06.3 - Admin Building																								
0630-3111	Admin Bldg Pre-bored H-pile GL A-F (31 nos.) - Drilling	0	24-Feb-14 A	17-Jul-14 A	11-Aug-19	11-Aug-19		Admin Bldg Pre-bored H-pile GL A-F (31 nos.) - Drilling																
0630-3112	Admin Bldg Pre-bored H-pile GL A-F (31 nos.) - H-beam + Grouting	15	27-Mar-14 A	06-Aug-14	26-Nov-14	12-Dec-14	107	Admin Bldg Pre-bored H-pile GL A-F (31 nos.) - H-beam + Grouting																
0630-3121	Admin Bldg Pre-bored H-pile GL G-N (24 nos.) - Drilling	0	24-Feb-14 A	12-Jul-14 A	11-Aug-19	11-Aug-19		Admin Bldg Pre-bored H-pile GL G-N (24 nos.) - Drilling																
0630-3122	Admin Bldg Pre-bored H-pile GL G-N (24 nos.) - H-beam + Grouting	15	27-Mar-14 A	06-Aug-14	26-Nov-14	12-Dec-14	107	Admin Bldg Pre-bored H-pile GL G-N (24 nos.) - H-beam + Grouting																
0630-3131	Admin Bldg Pre-bored H-pile GL P-Q (10 nos.) - Drilling	0	07-Jun-14 A	19-Jul-14 A	11-Aug-19	11-Aug-19		Admin Bldg Pre-bored H-pile GL P-Q (10 nos.) - Drilling																
0630-3132	Admin Bldg Pre-bored H-pile GL P-Q (10 nos.) - H-beam + Grouting	24	21-Jun-14 A	16-Aug-14	04-Oct-14	31-Oct-14	62	Admin Bldg Pre-bored H-pile GL P-Q (10 nos.) - H-beam + Grouting																
0630-3119	Admin Bldg Ground Beam	48	30-Sep-14	26-Nov-14	13-Dec-14	09-Feb-15	62	Admin Bldg Ground Beam																
09 - SECTION 6 OF THE WORKS																								
09.2 - Westbound - Pier 26-27																								
0920-2105	Pier 26 Pile G.I. Final Report / Founding Level	0	17-Jun-14 A	19-Jul-14 A	25-Sep-15	25-Sep-15		Pier 26 Pile G.I. Final Report / Founding Level																
10 - SECTION X OF THE WORKS																								
10.1 - E/B Bridges (Bridge D, E and F)																								
10.1.1 - Marine Pier Construction																								
Pier F03 to F15																								
1011-3255	F5 Dolphin Construction	0	06-May-14 A	30-Jun-14 A	09-Aug-14	09-Aug-14		F5 Dolphin Construction																
1011-3245	F13 Dolphin Construction	9	28-May-14 A	30-Jul-14	26-Aug-14	04-Sep-14	31	F13 Dolphin Construction																
1011-3265	F14 Dolphin Construction	15	03-Jun-14 A	06-Aug-14	26-Aug-14	12-Sep-14	31	F14 Dolphin Construction																
1011-3271	F4 Dolphin Construction	17	19-Jun-14 A	08-Aug-14	02-Aug-14	21-Aug-14	11	F4 Dolphin Construction																
1011-3272	F3 Dolphin Construction	23	08-Jul-14 A	15-Aug-14	02-Aug-14	28-Aug-14	11	F3 Dolphin Construction																
1011-3273	F2 Dolphin Construction	24	11-Jul-14 A	25-Aug-14	30-Dec-14	27-Jan-15	128	F2 Dolphin Construction																
1011-3274	F1 Dolphin Construction	24	09-Aug-14	05-Sep-14	12-Jan-15	07-Feb-15	128	F1 Dolphin Construction																
1011-3296	F10 Dolphin Fender Installation	9	24-Jul-14*	02-Aug-14	19-Aug-14	28-Aug-14	22	F10 Dolphin Fender Installation																
1011-3297	F9 Dolphin Fender Installation	9	31-Jul-14	09-Aug-14	26-Aug-14	04-Sep-14	22	F9 Dolphin Fender Installation																
1011-3298	F8 Dolphin Fender Installation	9	07-Aug-14	16-Aug-14	02-Sep-14	12-Sep-14	22	F8 Dolphin Fender Installation																
1011-3306	F11 Dolphin Fender Installation	9	14-Aug-14	23-Aug-14	08-Jan-15	17-Jan-15	121	F11 Dolphin Fender Installation																
1011-3307	F12 Dolphin Fender Installation	9	21-Aug-14	30-Aug-14	15-Jan-15	24-Jan-15	121	F12 Dolphin Fender Installation																
1011-3308	F13 Dolphin Fender Installation	9	28-Aug-14	06-Sep-14	22-Jan-15	31-Jan-15	121	F13 Dolphin Fender Installation																
1011-3309	F14 Dolphin Fender Installation	9	04-Sep-14	15-Sep-14	29-Jan-15	07-Feb-15	121	F14 Dolphin Fender Installation																
Pier F01 to F02																								
1011-2890	F1B Pile Cap Shutter Cofferdam	0	01-Jul-14 A	19-Jul-14 A	11-Mar-17	11-Mar-17		F1B Pile Cap Shutter Cofferdam																
1011-2895	F1B Pile Cap Construction	18	19-Jul-14 A	09-Aug-14	11-Mar-17	31-Mar-17	795	F1B Pile Cap Construction																
1011-2900	F1B Pier/Column Construction	12	11-Aug-14	23-Aug-14	01-Apr-17	18-Apr-17	795	F1B Pier/Column Construction																
1011-2910	F1B Crosshead Construction	18	25-Aug-14	15-Sep-14	19-Apr-17	10-May-17	795	F1B Crosshead Construction																
1011-2850	F2B Crosshead Construction	18	16-Sep-14	08-Oct-14	11-May-17	01-Jun-17	795	F2B Crosshead Construction																
1011-2930	Bearing installation pier F1B/F2B	12	09-Oct-14	22-Oct-14	02-Jun-17	15-Jun-17	795	Bearing installation pier F1B/F2B																
10.1.3 - E/B Bridge Construction																								
Bridge D3																								
1013-1921	Bridge D3 Parapet North D3-N01 to D3-N10 Prefab Rebar Install	0	16-Jun-14 A	05-Jul-14 A	20-Jul-14	20-Jul-14		Bridge D3 Parapet North D3-N01 to D3-N10 Prefab Rebar Install																
1013-1923	Bridge D3 Parapet North D3-N13 - Concreting (F3)	0	03-Jul-14 A	11-Jul-14 A	27-Jul-14	27-Jul-14		Bridge D3 Parapet North D3-N13 - Concreting (F3)																
1013-1133.1	Bridge D3 Parapet North D3-N04 to D3-N01 - Concreting (F5)	8	16-Jul-14 A	27-Jul-14	20-Jul-14	27-Jul-14	0	Bridge D3 Parapet North D3-N04 to D3-N01 - Concreting (F5)																

- Remaining Level of Effort
- Actual Level of Effort
- Actual Work
- Remaining Work
- Critical Remaining Work
- ◆ Milestone

Contract HY/2009/19

Three Month Rolling Programme (20 Jul to 19 Oct 2014)

3MRP

3MRP - Jul 2014 to Oct 2014

Page 6 of 10

Activity ID	Activity Name	Rem Dur	Start	Finish	Late Start	Late Finish	Total Float	2014													
								July				August				September				October	
								23	30	07	14	21	28	04	11	18	25	01	08	15	22
1013-1865	Bridge D3 Parapet North D3-N10 to D3-N05 - Concreting (F1)	21	20-Jul-14	09-Aug-14	22-Jul-14	11-Aug-14	2	Bridge D3 Parapet North D3-N10 to D3-N05 - Concreting (F1)													
1013-1138.1	Bridge D3 Par. North D3-N11 to D3-N12 - Scaffolding	12	01-Aug-14	14-Aug-14	08-Aug-14	21-Aug-14	6	Bridge D3 Par. North D3-N11 to D3-N12 - Scaffolding													
1013-1138.2	Bridge D3 Par. North D3-N11 to D3-N12 - Rebar Fixing	9	08-Aug-14	18-Aug-14	15-Aug-14	25-Aug-14	6	Bridge D3 Par. North D3-N11 to D3-N12 - Rebar Fixing													
1013-1138.3	Bridge D3 Par. North D3-N11 to D3-N12 - Formworks + Concreting	6	15-Aug-14	21-Aug-14	22-Aug-14	28-Aug-14	6	Bridge D3 Par. North D3-N11 to D3-N12 - Formworks + Concreting													
1013-1132	Bridge D3 Parapet South D3-S13 to D3-S08 - Concreting (F2)	0	08-Jun-14 A	04-Jul-14 A	11-Aug-19	11-Aug-19		Bridge D3 Parapet South D3-S13 to D3-S08 - Concreting (F2)													
1013-1993	Bridge D3 Parapet South D3-S04 to D3-S01 - Rebar Fixing (F5)	0	13-Jun-14 A	26-Jun-14 A	11-Aug-19	11-Aug-19		Bridge D3 Parapet South D3-S04 to D3-S01 - Rebar Fixing (F5)													
1013-1963	Bridge D3 Parapet South D3-S04 to D3-S01 - Concreting (F4)	0	19-Jun-14 A	12-Jul-14 A	27-Jul-14	27-Jul-14		Bridge D3 Parapet South D3-S04 to D3-S01 - Concreting (F4)													
1013-1973	Bridge D3 Parapet South D3-S05 to D3-S07 - Concreting (F4)	0	08-Jul-14 A	16-Jul-14 A	11-Aug-19	11-Aug-19		Bridge D3 Parapet South D3-S05 to D3-S07 - Concreting (F4)													
1013-2153	Bridge D3 Parapet South D3-S05 to D3-S07 - Prefab Rebar Install	0	05-Jul-14 A	10-Jul-14 A	11-Aug-19	11-Aug-19		Bridge D3 Parapet South D3-S05 to D3-S07 - Prefab Rebar Install													
1013-1869	Bridge D3 Road Lighting	9	19-Aug-14	28-Aug-14	29-Aug-14	08-Sep-14	9	Bridge D3 Road Lighting													
1013-1870	Bridge D3 Parapet Railing	9	19-Aug-14	28-Aug-14	29-Aug-14	08-Sep-14	9	Bridge D3 Parapet Railing													
1013-1144.1	Bridge D3 - Seal Deck Opening + Waterproofing Preparation	9	13-Aug-14	21-Aug-14	20-Aug-14	28-Aug-14	7	Bridge D3 - Seal Deck Opening + Waterproofing Preparation													
1013-1886	Bridge D3 MJ at Abutment D12	6	19-Aug-14	24-Aug-14	26-Aug-14	31-Aug-14	7	Bridge D3 MJ at Abutment D12													
1013-1144	Bridge D3 Deck Waterproofing	3	22-Aug-14	24-Aug-14	29-Aug-14	31-Aug-14	7	Bridge D3 Deck Waterproofing													
1013-1145	Bridge D3 Deck Paving & Marking	9	25-Aug-14	02-Sep-14	01-Sep-14	09-Sep-14	7	Bridge D3 Deck Paving & Marking													
Bridge D2																					
1013-1565	Bridge D2 Parapet North Prefab Rebar Install D2-N01 to D2-N14	2	19-Jun-14 A	21-Jul-14	15-Aug-14	16-Aug-14	26	Bridge D2 Parapet North Prefab Rebar Install D2-N01 to D2-N14													
1013-1913	Bridge D2 Parapet North D2-N08 to D2-N11 - Concreting (F3)	0	08-Jul-14 A	19-Jul-14 A	11-Aug-19	11-Aug-19		Bridge D2 Parapet North D2-N08 to D2-N11 - Concreting (F3)													
1013-1706	Bridge D2 Parapet North D2-N12 to D2-N14 - Concreting (F5)	9	31-Jul-14	08-Aug-14	31-Jul-14	08-Aug-14	0	Bridge D2 Parapet North D2-N12 to D2-N14 - Concreting (F5)													
1013-1566	Bridge D2 Parapet North D2-N01 to D2-N04 - Concreting (F5)	12	17-Aug-14	28-Aug-14	17-Aug-14	28-Aug-14	0	Bridge D2 Parapet North D2-N01 to D2-N04 - Concreting (F5)													
1013-1705	Bridge D2 Parapet North D2-N05 to D2-N07 - Concreting (F5)	10	17-Aug-14	26-Aug-14	19-Aug-14	28-Aug-14	2	Bridge D2 Parapet North D2-N05 to D2-N07 - Concreting (F5)													
1013-1133	Bridge D2 Parapet South D2-S12 to D2-S13- Rebar Fixing (F5)	0	03-Jul-14 A	18-Jul-14 A	03-Aug-14	03-Aug-14		Bridge D2 Parapet South D2-S12 to D2-S13- Rebar Fixing (F5)													
1013-1134	Bridge D2 Parapet South Prefab Rebar Install D2-S11 to D2-S03	6	02-Jul-14 A	25-Jul-14	11-Aug-14	16-Aug-14	22	Bridge D2 Parapet South Prefab Rebar Install D2-S11 to D2-S03													
1013-1863	Bridge D2 Parapet South D2-S13 to D2-S10 - Concreting (F4)	8	13-Jul-14 A	27-Jul-14	27-Jul-14	03-Aug-14	7	Bridge D2 Parapet South D2-S13 to D2-S10 - Concreting (F4)													
1013-1943	Bridge D2 Parapet South D2-S03 to D2-S09 - Concreting (F2)	24	17-Jul-14 A	12-Aug-14	05-Aug-14	28-Aug-14	16	Bridge D2 Parapet South D2-S03 to D2-S09 - Concreting (F2)													
1013-2143	Bridge D2 Parapet South Prefab Rebar Install D2-S01 to D2-S02	6	13-Aug-14	18-Aug-14	16-Aug-14	21-Aug-14	3	Bridge D2 Parapet South Prefab Rebar Install D2-S01 to D2-S02													
1013-1953	Bridge D2 Parapet South D2-S01 - D2-S02 - Concreting (F2)	7	21-Aug-14	27-Aug-14	22-Aug-14	28-Aug-14	1	Bridge D2 Parapet South D2-S01 - D2-S02 - Concreting (F2)													
1013-1880	Bridge D2 Road Lighting	10	21-Aug-14	01-Sep-14	28-Aug-14	08-Sep-14	6	Bridge D2 Road Lighting													
1013-1881	Bridge D2 Parapet Railing	10	21-Aug-14	01-Sep-14	28-Aug-14	08-Sep-14	6	Bridge D2 Parapet Railing													
1013-1860.1	Bridge D2 - Seal Deck Opening / Waterproofing Preparation	9	20-Aug-14	28-Aug-14	20-Aug-14	28-Aug-14	0	Bridge D2 - Seal Deck Opening / Waterproofing Preparation													
1013-1891	Bridge D2 MJ at Pier D8	6	26-Aug-14	31-Aug-14	26-Aug-14	31-Aug-14	0	Bridge D2 MJ at Pier D8													
1013-1860	Bridge D2 Deck Waterproofing	3	29-Aug-14	31-Aug-14	29-Aug-14	31-Aug-14	0	Bridge D2 Deck Waterproofing													
1013-1561	Bridge D2 Deck Paving & Marking	9	01-Sep-14	09-Sep-14	01-Sep-14	09-Sep-14	0	Bridge D2 Deck Paving & Marking													
Bridge D1																					
1013-1650	Bridge D1 Stitching at midspan between D01-D02 + Tendon Stressing	0	16-Jun-14 A	23-Jun-14 A	25-Jul-14	25-Jul-14		Bridge D1 Stitching at midspan between D01-D02 + Tendon Stressing													
1013-1660	Bridge D1 Permanent Stressing	10	13-Jul-14 A	29-Jul-14	25-Jul-14	03-Aug-14	5	Bridge D1 Permanent Stressing													
1013-1651	BackLaunch LG to Pier D03 to D05	0	13-Jul-14 A	15-Jul-14 A	11-Aug-19	11-Aug-19		BackLaunch LG to Pier D03 to D05													
1013-1652	Dismantle LG - E&M and Trusses	12	16-Jul-14 A	31-Jul-14	20-Jul-14	31-Jul-14	0	Dismantle LG - E&M and Trusses													
1013-1653	Dismantle LG - Complete	6	01-Aug-14	06-Aug-14	04-Aug-14	09-Aug-14	3	Dismantle LG - Complete													
1013-1704	Bridge D1 Parapet North D1-N01 to D1-N10 Prefab Rebar Install	12	01-Aug-14	12-Aug-14	01-Aug-14	12-Aug-14	0	Bridge D1 Parapet North D1-N01 to D1-N10 Prefab Rebar Install													
1013-1933	Bridge D1 Parapet North D1-N01 to D1-N08 - Concreting (F3)	25	04-Aug-14	28-Aug-14	04-Aug-14	28-Aug-14	0	Bridge D1 Parapet North D1-N01 to D1-N08 - Concreting (F3)													
1013-1708	Bridge D1 Parapet North D1-N09 to D1-N10 - Concreting (F5)	8	09-Aug-14	16-Aug-14	09-Aug-14	16-Aug-14	0	Bridge D1 Parapet North D1-N09 to D1-N10 - Concreting (F5)													
1013-1701	Bridge D1 Parapet South D1-S01 to D1-S10 - Prefab Rebar Install	12	01-Aug-14	12-Aug-14	04-Aug-14	15-Aug-14	3	Bridge D1 Parapet South D1-S01 to D1-S10 - Prefab Rebar Install													
1013-1983	Bridge D1 Parapet South D1-S01 to D1-S06 - Concreting (F4)	18	04-Aug-14	21-Aug-14	11-Aug-14	28-Aug-14	7	Bridge D1 Parapet South D1-S01 to D1-S06 - Concreting (F4)													

- Remaining Level of Effort
- Actual Level of Effort
- Actual Work
- Remaining Work
- Critical Remaining Work
- ◆ Milestone

Contract HY/2009/19

Three Month Rolling Programme (20 Jul to 19 Oct 2014)

3MRP

3MRP - Jul 2014 to Oct 2014

Page 7 of 10

Activity ID	Activity Name	Rem Dur	Start	Finish	Late Start	Late Finish	Total Float	2014																	
								July						August				September				October			
								23	30	07	14	21	28	04	11	18	25	01	08	15	22	29	06	13	
1013-1703	Bridge D1 Parapet South D1-S07 to D1-S10 - Concreting (F2)	14	07-Aug-14	20-Aug-14	08-Aug-14	21-Aug-14	1																		
1013-1882	Bridge D1 Road Lighting	10	22-Aug-14	02-Sep-14	01-Sep-14	12-Sep-14	8																		
1013-1883	Bridge D1 Parapet Railing	10	22-Aug-14	02-Sep-14	01-Sep-14	12-Sep-14	8																		
1013-1715.1	Bridge D1 - Seal Deck Opening / Waterproofing Preparation	9	20-Aug-14	28-Aug-14	20-Aug-14	28-Aug-14	0																		
1013-1892	Bridge D1 MJ at Pier D1 and D4	7	23-Aug-14	30-Aug-14	23-Aug-14	30-Aug-14	0																		
1013-1715	Bridge D1 Deck Waterproofing	3	29-Aug-14	31-Aug-14	29-Aug-14	31-Aug-14	0																		
1013-1716	Bridge D1 Deck Paving & Marking	9	01-Sep-14	09-Sep-14	01-Sep-14	09-Sep-14	0																		
Bridge F1A																									
1013-1256	Bridge F1A Parapet North F1-N09 to F1-N03 - Concreting (F1)	0	11-Jun-14 A	30-Jun-14 A	22-Jul-14	22-Jul-14																			
1013-1903	Bridge F1A Parapet North F1-N01 to F1-N02 - Concreting (F3)	0	04-Jul-14 A	08-Jul-14 A	27-Jul-14	27-Jul-14																			
1013-1258	Bridge F1A South Wing Extension Formwork + Casting	12	15-May-14 A	02-Aug-14	02-Aug-14	15-Aug-14	11																		
1013-1866	Bridge F1A Int. Double Noise Encl. Install Columns (North)	12	21-Jul-14	02-Aug-14	06-Aug-14	19-Aug-14	14																		
1013-1867	Bridge F1A Int. Double Noise Encl. Install Columns (South)	12	31-Jul-14	13-Aug-14	13-Aug-14	26-Aug-14	11																		
1013-1868	Bridge F1A Int. Double Noise Encl. Install Beams	12	07-Aug-14	20-Aug-14	20-Aug-14	02-Sep-14	11																		
1013-1872	Bridge F1A Road Lighting	9	11-Aug-14	20-Aug-14	29-Aug-14	08-Sep-14	16																		
1013-1873	Bridge F1A Parapet Railing	9	11-Aug-14	20-Aug-14	29-Aug-14	08-Sep-14	16																		
1013-1265.1	Bridge F1A - Seal Deck Opening + Waterproofing Preparation	9	10-Aug-14	18-Aug-14	23-Aug-14	31-Aug-14	13																		
1013-1887	Bridge F1A MJ at Pier F3A	6	12-Aug-14	18-Aug-14	25-Aug-14	30-Aug-14	11																		
1013-1265	Bridge F1A Deck Waterproofing	3	19-Aug-14	21-Aug-14	01-Sep-14	03-Sep-14	13																		
1013-1266	Bridge F1A Deck Paving & Marking	6	22-Aug-14	27-Aug-14	04-Sep-14	09-Sep-14	13																		
Bridge F2A																									
1013-1367	Bridge F2A South Wing Extension Formwork + Casting	6	20-May-14 A	26-Jul-14	04-Aug-14	09-Aug-14	12																		
1013-1376	Bridge F2A Int. Double Noise Encl. Install Columns (North)	7	12-Jul-14 A	28-Jul-14	04-Aug-14	11-Aug-14	12																		
1013-1377	Bridge F2A Int. Double Noise Encl. Install Columns (South)	12	14-Jul-14 A	02-Aug-14	04-Aug-14	16-Aug-14	12																		
1013-1378	Bridge F2A Int. Double Noise Encl. Install Beams	11	29-Jul-14	09-Aug-14	12-Aug-14	23-Aug-14	12																		
1013-1874	Bridge F2A Road Lighting	9	31-Jul-14	09-Aug-14	29-Aug-14	08-Sep-14	25																		
1013-1875	Bridge F2A Parapet Railing	9	31-Jul-14	09-Aug-14	29-Aug-14	08-Sep-14	25																		
1013-1888	Bridge F2A MJ at Pier F5	6	09-Aug-14	15-Aug-14	23-Aug-14	29-Aug-14	12																		
1013-1374.1	Bridge F2A - Seal Deck Opening + Waterproofing Preparation	6	10-Aug-14	15-Aug-14	24-Aug-14	29-Aug-14	14																		
1013-1374	Bridge F2A Deck Waterproofing	3	16-Aug-14	18-Aug-14	30-Aug-14	01-Sep-14	14																		
1013-1375	Bridge F2A Deck Paving & Marking	6	19-Aug-14	25-Aug-14	02-Sep-14	08-Sep-14	12																		
Bridge F3A																									
1013-1889	Bridge F3A MJ at Pier F8	6	15-Aug-14	21-Aug-14	23-Aug-14	29-Aug-14	7																		
1013-1428.1	Bridge F3A - Seal Deck Opening + Waterproofing Preparation	6	16-Aug-14	21-Aug-14	24-Aug-14	29-Aug-14	8																		
1013-1428	Bridge F3A Deck Waterproofing	3	22-Aug-14	24-Aug-14	30-Aug-14	01-Sep-14	8																		
1013-1430	Bridge F3A Deck Paving & Marking	6	25-Aug-14	30-Aug-14	02-Sep-14	08-Sep-14	7																		
Bridge F5/F4																									
1013-1436	Bridge F4/F5 - Pier F8 to F10 - Top Slab Formworks	6	11-Jun-14 A	25-Jul-14	26-Jul-14	31-Jul-14	6																		
1013-1439	Bridge F4/F5 - Pier F8 to F10 - Top Slab Rebar Fixing	12	19-Jul-14 A	31-Jul-14	15-Aug-14	26-Aug-14	26																		
1013-1441	Bridge F4/F5 - Pier F8 to F10 - Top Slab Concreting	6	29-Jul-14	03-Aug-14	24-Aug-14	29-Aug-14	26																		
1013-2103	Bridge F4/F5 - Pier F8 to F10 - Longitudinal Stitch/ Tie-in	6	04-Aug-14	09-Aug-14	30-Aug-14	04-Sep-14	26																		
1013-1446	Bridge F4 - Pier F10 to F15 Diaphragm	0	20-Jun-14 A	15-Jul-14 A	15-Aug-14	15-Aug-14																			
1013-2160	Bridge F4 - Pier F10 to F11 - Top Slab Formworks	9	26-Jul-14	05-Aug-14	01-Aug-14	11-Aug-14	5																		
1013-2162	Bridge F4 - Pier F11 to F12 - Top Slab Formworks	9	30-Jul-14	08-Aug-14	05-Aug-14	14-Aug-14	5																		

- █ Remaining Level of Effort
- █ Actual Level of Effort
- █ Actual Work
- █ Remaining Work
- █ Critical Remaining Work
- ◆ Milestone

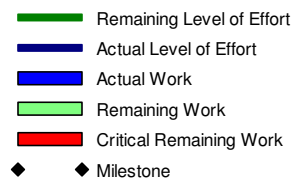
Contract HY/2009/19

Three Month Rolling Programme (20 Jul to 19 Oct 2014)

3MRP

3MRP - Jul 2014 to Oct 2014

Activity ID	Activity Name	Rem Dur	Start	Finish	Late Start	Late Finish	Total Float	2014																
								July					August				September				October			
								23	30	07	14	21	28	04	11	18	25	01	08	15	22	29	06	13
1013-2164	Bridge F4 - Pier F12 to F13 - Top Slab Formworks	9	02-Aug-14	12-Aug-14	08-Aug-14	18-Aug-14	5																	
1013-2166	Bridge F4 - Pier F13 to F14 - Top Slab Formworks	9	06-Aug-14	15-Aug-14	12-Aug-14	21-Aug-14	5																	
1013-2168	Bridge F4 - Pier F14 to F15 - Top Slab Formworks	9	09-Aug-14	19-Aug-14	15-Aug-14	25-Aug-14	5																	
1013-2170	Bridge F4 - Pier F10 to F15 - Top Slab Rebar Fixing	14	07-Aug-14	22-Aug-14	13-Aug-14	28-Aug-14	5																	
1013-2172	Bridge F4 - Pier F10 to F15 - Top Slab Concreting	12	13-Aug-14	26-Aug-14	19-Aug-14	01-Sep-14	5																	
1013-2174	Bridge F4 - Pier F10 to F15 - Longitudinal Stitch Tie-in	6	23-Aug-14	29-Aug-14	29-Aug-14	04-Sep-14	5																	
1013-1454.1	Bridge F4/F5 - Waterproofing Preparation	6	23-Aug-14	29-Aug-14	29-Aug-14	04-Sep-14	5																	
1013-1890	Bridge F4/F5 MJ at Pier F9-F14	9	23-Aug-14	02-Sep-14	29-Aug-14	08-Sep-14	5																	
1013-1454	Bridge F4/F5 Deck Waterproofing	3	30-Aug-14	02-Sep-14	05-Sep-14	08-Sep-14	5																	
1013-1455	Bridge F4/F5 Deck Paving & Marking	3	03-Sep-14	05-Sep-14	10-Sep-14	12-Sep-14	5																	
All E/B Bridges (Common)																								
1013-1826	E/B Bridge Install. Temp. Hydrant (Landside)	14	23-Aug-14	08-Sep-14	23-Aug-14	08-Sep-14	0																	
1013-1735	Noise Barrier Mock-up	18	19-Sep-14	11-Oct-14	27-Sep-14	20-Oct-14	7																	
1013-1710	Permanent Noise Barrier Type C1 E/B Bridge Ch 1059-1362 (304m)	36	30-Sep-14	12-Nov-14	10-Oct-14	20-Nov-14	7																	
10.1.4 - Bridge E / Hing Fat Slip Road																								
Pier Construction																								
1014-1170	Modify Slip Road E/B Cap, Pier and Crosshead (E1 & E2)	42	13-Oct-14	29-Nov-14	14-Oct-14	01-Dec-14	1																	
Bridge Construction																								
1014-1176	Bridge E - Pier E1 to D1 - Diaphragm	0	23-Jun-14 A	30-Jun-14 A	28-Jul-14	28-Jul-14																		
1014-1177	Bridge E - Pier E1 to D1 - Top Slab	9	01-Jul-14 A	28-Jul-14	28-Jul-14	05-Aug-14	8																	
1014-1178	Bridge E - Pier E2 to D1 - North Wing Slab	14	04-Aug-14	17-Aug-14	12-Aug-14	25-Aug-14	8																	
1014-1242	Bridge E - Pier E2 to D1 - Temporary Parapet	12	15-Aug-14	26-Aug-14	23-Aug-14	03-Sep-14	8																	
1013-1885	Bridge E/T1A - Road Lighting	9	15-Aug-14	25-Aug-14	02-Sep-14	12-Sep-14	15																	
1013-1893	Bridge E - MJ at Pier E1 and E2	6	21-Aug-14	26-Aug-14	29-Aug-14	03-Sep-14	8																	
1013-1895	Bridge E - Waterproofing Preparation	6	21-Aug-14	26-Aug-14	29-Aug-14	03-Sep-14	8																	
1013-1894	Bridge E - Deck Waterproofing	3	27-Aug-14	29-Aug-14	04-Sep-14	06-Sep-14	8																	
1013-2133	Bridge E - Deck Paving & Marking	6	30-Aug-14	04-Sep-14	07-Sep-14	12-Sep-14	8																	
10.3 - Middle Bridge (Bridge F)																								
10.3.1 - Pier Construction																								
Abutment D12																								
1031-1052	Abut D12 (Approach Ramp Area) - Excavation	9	14-Jul-14 A	30-Jul-14	05-Jan-15	14-Jan-15	139																	
1031-1054	Abut D12 (Approach Ramp Area) - Pile Trimming	12	31-Jul-14	13-Aug-14	15-Jan-15	28-Jan-15	139																	
1031-1056	Abut D12 (Approach Ramp Area) - Concrete Part 1 of 3	12	14-Aug-14	27-Aug-14	29-Jan-15	11-Feb-15	139																	
1031-1057	Abut D12 (Approach Ramp Area) - Concrete Part 2 of 3	12	28-Aug-14	11-Sep-14	12-Feb-15	28-Feb-15	139																	
1031-1058	Abut D12 (Approach Ramp Area) - Concrete Part 3 of 3	12	12-Sep-14	25-Sep-14*	02-Mar-15	14-Mar-15	139																	
10.4 - Bridge Deck Demolition																								
10.4.2 - Existing E/B Bridge																								
1042-1010	Demolish Beam - Existing Hing Fat St Slip Rd Pier E3 to Pier 20 (9 beam)	12	19-Sep-14	04-Oct-14	20-Sep-14	06-Oct-14	1																	
1042-1011	Demolish Pier - Existing Hing Fat St Slip Rd Pier 19 an 20	12	26-Sep-14	11-Oct-14	27-Sep-14	13-Oct-14	1																	
10.5 - Temporary Bridge																								
10.5.1 - Temporary Bridge 'TA'																								
1051-1018	Temporary Bridge TA1 - Parapet	0	13-Jan-14 A	30-Jun-14 A	11-Aug-19	11-Aug-19																		
10.5.3 - Temporary Bridge 'TD'																								
1053-1013.1	"TD" - Pier F8 to F9 Rebar Fixing + Concreting	0	16-Jun-14 A	10-Jul-14 A	15-Aug-14	15-Aug-14																		



Contract HY/2009/19
Three Month Rolling Programme (20 Jul to 19 Oct 2014)

Activity ID	Activity Name	Rem Dur	Start	Finish	Late Start	Late Finish	Total Float	2014																	
								July					August					September				October			
								23	30	07	14	21	28	04	11	18	25	01	08	15	22	29	06	13	
1053-1013.2	"TD" - Pier F9 to F10 Rebar Fixing + Concreting	0	30-Jun-14 A	17-Jul-14 A	11-Aug-19	11-Aug-19																			
1053-1014	"TD" - Pier F8 to F10 Parapet	12	21-Jul-14	02-Aug-14	21-Aug-14	03-Sep-14	27																		
1053-1021	"TD" - Pier F11, F12, F13 and F14 Tower Erection	0	27-May-14 A	09-Jul-14 A	31-Jul-14	31-Jul-14																			
1053-1061	"TD" - Pier F10 to F14 Beam Erection	0	23-Jun-14 A	14-Jul-14 A	31-Jul-14	31-Jul-14																			
1053-1062	"TD" - Pier F10 to F14 Bond Deck Erection	1	05-Jul-14 A	21-Jul-14	31-Jul-14	31-Jul-14	9																		
1053-1063	"TD" - Pier F10 to F14 Rebar Fixing	12	15-Jul-14 A	04-Aug-14	01-Aug-14	14-Aug-14	9																		
1053-1064	"TD" - Pier F10 to F14 Concrete Deck	12	28-Jul-14	11-Aug-14	08-Aug-14	21-Aug-14	9																		
1053-1065	"TD" - Pier F10 to F14 Parapet	12	04-Aug-14	18-Aug-14	29-Aug-14	12-Sep-14	21																		
1053-1150	"TD" - F6-F5 Tower + Beam Erection	7	01-Aug-14	07-Aug-14	09-Aug-14	15-Aug-14	8																		
1053-1152	"TD" - F6-F5 Bond Deck Erection	5	08-Aug-14	12-Aug-14	16-Aug-14	20-Aug-14	8																		
1053-1154	"TD" - F6-F5 Rebar Fixing + Concreting	9	13-Aug-14	21-Aug-14	21-Aug-14	29-Aug-14	8																		
1053-1140	"TD" - F6-F7 Tower + Beam Erection	7	25-Jul-14	31-Jul-14	02-Aug-14	08-Aug-14	8																		
1053-1142	"TD" - F6-F7 Bond Deck Erection	5	03-Aug-14	07-Aug-14	11-Aug-14	15-Aug-14	8																		
1053-1144	"TD" - F6-F7 Rebar Fixing + Concreting	9	08-Aug-14	16-Aug-14	16-Aug-14	24-Aug-14	8																		
1053-1130	"TD" - F7-F8 Tower + Beam Erection	5	17-Jul-14 A	24-Jul-14	28-Jul-14	01-Aug-14	8																		
1053-1132	"TD" - F7-F8 Bond Deck Erection	5	25-Jul-14	29-Jul-14	02-Aug-14	06-Aug-14	8																		
1053-1134	"TD" - F7-F8 Rebar Fixing + Concreting	9	30-Jul-14	07-Aug-14	07-Aug-14	15-Aug-14	8																		
1053-1160	"TD" - F5 to F8 Parapet	9	16-Aug-14	24-Aug-14	24-Aug-14	01-Sep-14	8																		
1053-1010.93	"TD" - Deck Paving & Marking	6	25-Aug-14	30-Aug-14	04-Sep-14	09-Sep-14	10																		
10.6 - Tunnel Approach Ramp																									
10.6.1 - Approach Ramp (Excluding Portion IIB)																									
Bored Piles																									
1061-1670	Pre-drilling Approach Ramp Bored Piles Except Oil St and Portion IIB	18	19-Jul-13 A	09-Aug-14*	10-Oct-14	30-Oct-14	67																		
1061-1920	Bored Pile Ramp - BM30	0	10-Jun-14 A	27-Jun-14 A	19-Aug-14	19-Aug-14																			
1061-1930	Bored Pile Ramp - BM10	0	16-Jun-14 A	28-Jun-14 A	11-Aug-19	11-Aug-19																			
1061-1950	Bored Pile Ramp - BM22	0	20-Jun-14 A	03-Jul-14 A	11-Aug-19	11-Aug-19																			
1061-1960	Bored Pile Ramp - BM33	0	04-Jul-14 A	15-Jul-14 A	11-Aug-19	11-Aug-19																			
1061-1990	Bored Pile Ramp - BS17	0	28-Jun-14 A	14-Jul-14 A	11-Aug-19	11-Aug-19																			
1061-2050	Bored Pile Ramp - BM09	10	15-Jul-14 A	31-Jul-14	19-Aug-14	30-Aug-14	26																		
1061-1970	Bored Pile Ramp - BM31	15	21-Jul-14	06-Aug-14	01-Sep-14	18-Sep-14	36																		
1061-2060	Bored Pile Ramp - BN32	15	01-Aug-14	19-Aug-14	30-Aug-14	18-Sep-14	26																		
1061-1980	Bored Pile Ramp - BN25	15	07-Aug-14	23-Aug-14	19-Sep-14	08-Oct-14	36																		
1061-2070	Bored Pile Ramp - BN34	15	19-Aug-14	05-Sep-14	19-Sep-14	08-Oct-14	26																		
1061-2000	Bored Pile Ramp - BM12	15	25-Aug-14	11-Sep-14	09-Oct-14	25-Oct-14	36																		
1061-2080	Bored Pile Ramp - BN33	15	05-Sep-14	24-Sep-14	09-Oct-14	25-Oct-14	26																		
1061-2010	Bored Pile Ramp - BM11	15	12-Sep-14	29-Sep-14	27-Oct-14	12-Nov-14	36																		
1061-2090	Bored Pile Ramp - BN35	15	24-Sep-14	14-Oct-14	27-Oct-14	12-Nov-14	26																		
1061-2020	Bored Pile Ramp - BM16	15	30-Sep-14	18-Oct-14	13-Nov-14	29-Nov-14	36																		
1061-2100	Bored Pile Ramp - BM08	15	14-Oct-14	31-Oct-14*	13-Nov-14	29-Nov-14	26																		
10.7 - Section X - Miscellaneous Works																									
10.7.1 - TTM Stages																									
1071-1005	TTM Stage 2A - TMLG / TD / Police Consultation and Endorsement	9	17-Jul-14 A	30-Jul-14	22-Jul-14	31-Jul-14	1																		
1071-1010	TTM Stage 2A - TTM Enabling Works + Trial Run	3	10-Sep-14	12-Sep-14	10-Sep-14	12-Sep-14	0																		
1071-1020	TTM Stage 2A - Hing Fat Slip Road Divert to New E/B Bridge through 'TA'	0		12-Sep-14*		12-Sep-14	0																		

- █ Remaining Level of Effort
- █ Actual Level of Effort
- █ Actual Work
- █ Remaining Work
- █ Critical Remaining Work
- ◆ Milestone

Contract HY/2009/19

Three Month Rolling Programme (20 Jul to 19 Oct 2014)

3MRP

3MRP - Jul 2014 to Oct 2014

Activity Name	Duration (cal days)	Start	Finish	Total Float	2011		2012		2013		2014		2015		2016	
					Q1	Q2	Q3	Q4	Q1	Q2	Q3	Q4	Q1	Q2	Q3	Q4
HY/2009/15 - Works Programme Rev. K (DD:20-Feb-14) 1st Submission																
Works in East Ventilation Adit - Based on Alternative Method																
EAST VENTILATION ADIT - SUMMARY	7744	08-Apr-12 A	20-Jun-14	184												
Works in T81 Area (Portion 13A, 13B) & CCT at Portion 1,2,4,6,22																
T81 - Temporary Reclamation																
T81 - TEMPORARY RECLAMATION SUMMARY	1254	07-Jan-11 A	13-Aug-11 A													
T81 - Diaphragm Wall																
T81 DIAPHRAGM WALL & PUMP TEST SUMMARY	2154	19-Mar-11 A	30-Dec-11 A													
T81 - ELS Works																
T81 ELS SUMMARY	1074	09-Jan-12 A	16-Apr-12 A													
T81 - CCT RC Structure																
T81 CCT - SUMMARY	1904	12-Jan-12 A	19-Jun-12 A													
EV Adit at Portion 1,2,6,22																
EV Adit PORTION 1 & 2	276	12-Jun-12 A	17-Jul-12 A													
T81 - Removal of Temp. Reclamation																
T81 - REMOVAL OF TEMP. RECLAMATION SUMMARY	1339	04-Jun-12 A	15-Oct-12 A													
REMOVAL OF TEMP. RECLAMATION T81 (MAX=3110)	6049	25-Jan-11 A	20-Sep-12 A													
DURATION OF TEMP. RECLAMATION T81E (EXCLUDING T81W, MAX=900)	5578	13-Mar-11 A	20-Sep-12 A													
Works in T82 Area (Portion 13A, 13B)																
T82 - Temporary Reclamation																
T82 - TEMPORARY RECLAMATION SUMMARY	4304	16-Apr-12 A	25-Jun-13 A													
T82 - Diaphragm Wall																
T82 - DIAPHRAGM WALL SUMMARY	2818	21-Feb-12 A	23-Aug-13 A													
T82 - ELS Works																
T82 ELS SUMMARY	876	17-Sep-13 A	13-Dec-13 A													
T82 - CCT RC Structure																
T82 - CCT SUMMARY	1234	23-Nov-13 A	25-Mar-14	-594												
T82 - Removal of Temp. Reclamation																
T82 - REMOVAL OF TEMP. RECLAMATION SUMMARY	828	11-Mar-14	31-Aug-14	-1294												
DURATION OF TEMP. RECLAMATION T82 (MAX=5860)	12328	15-Jan-11 A	31-Aug-14	-1228												
DURATION OF TEMP. RECLAMATION T21 (MAX=9000)	12234	25-Jan-11 A	31-Aug-14	-1228												
Works in T81/T82 - Cable Trough/Maintenance Walkway																
T82 CABLE TROUGH SUMMARY	2184	06-Jun-14 A	11-Aug-14	-584												
Works in T84/ME4 Area (Portion 14A, 14B, 15, 23)																
T84 + ME4 (T84 + T26) Temporary Reclamation																
T84 - TEMPORARY RECLAMATION SUMMARY	3648	20-Jan-11 A	16-Apr-12 A													
T84/ME4 - Diaphragm Wall																
DIAPHRAGM WALL SUMMARY	3104	23-Dec-11 A	27-Oct-12 A													
T84/ME4 - ELS Works & Rock Excavation																
T84 - ELS + ROCK EXCAVATION SUMMARY	3788	19-Oct-12 A	22-Oct-13 A													
T84/ME4 - Mined Tunnel East Portal Works																
MT EAST PORTAL WORKS SUMMARY	2018	16-Aug-13 A	13-Mar-14	-2058												
T84/ME4 - CCT RC Structure																
T84/ME4 - CWB CCT SUMMARY	3104	20-May-13 A	06-Apr-14	-2054												
T84/ME4 - SCL CCT SUMMARY	1254	20-Dec-13 A	04-May-14	-2054												
T84/ME4 - Removal of Temporary Reclamation																
DURATION OF TEMP. RECLAMATION T84 (MAX=10000)	11004	28-Apr-11 A	29-Jun-14	-2168												
REMOVAL OF TEMP. RECLAMATION SUMMARY	648	28-Apr-14	30-Jun-14	-2168												
Re-Provision of Permanent Jetty/Floating Pontoon																
RE-PROVISION OF PERMANENT JETTY	1904	20-Feb-14	23-Aug-14	414												
CHT Protection Works at Location A,B,C																
ADMS Installation																
ADMS INSTALLATION - SUMMARY	744	01-Feb-11 A	15-Apr-11 A													
Standby Dewatering System(CSD: Grout Curtain Cut-off Wall Scheme)																
STANDBY DEWATERING SYSTEM - SUMMARY	4324	19-Apr-11 A	13-Jul-12 A													
VO.N0, B - Steel Weights & Aluminum Cladding Inside CHT																
VO No. B & 14 - STEEL WEIGHTS & CLADDING SUMMARY	3788	20-Aug-11 A	31-Aug-12 A													
Works in TPCWAE Area (Portion 20A, 20B)																
TPCWAE - Temporary Reclamation																
TPCWAE - TEMPORARY RECLAMATION SUMMARY	1438	08-Dec-10 A	07-Jun-11 A													
TPCWAE - Diaphragm Wall																
DIAPHRAGM WALL & PUMP TEST SUMMARY	2528	13-Jun-11 A	30-Jan-12 A													
TPCWAE - ELS Works & Soft Excavation																
TPCWAE - ELS SUMMARY (EXCEPT ROCK EXCAVATION)	2498	17-Jan-12 A	12-Sep-12 A													
TPCWAE - Rock Excavation																
TPCWAE - ROCK EXCAVATION SUMMARY	2764	19-Jun-12 A	05-Apr-13 A													
MT West Portal Works																
MT WEST PORTAL WORKS SUMMARY	3754	08-Nov-12 A	04-Dec-13 A													
CCT RC Structure																
CCT - AREA A	3094	24-Jan-13 A	18-Mar-14	-1278												
CCT - AREA B, STITCHING AREA	1114	27-Nov-13 A	23-Mar-14	-1278												
Removal of Temporary Reclamation																
REMOVAL OF RECLAMATION SUMMARY	438	15-Mar-14	30-Apr-14	-1438												
Works in TPCWAW Area																
TPCWAW - Temporary Reclamation																
TPCWAW - TEMPORARY RECLAMATION SUMMARY	854	02-May-14	26-Jun-14	03												
TPCWAW - Diaphragm Wall																
Diaphragm Wall & PUMP TEST SUMMARY	1934	27-Jun-14	04-Feb-15	03												
TPCWAW - ELS Works																
TPCWAW - ELS SUMMARY (EXCEPT ROCK EXCAVATION)	884	08-Feb-15	04-May-15	03												
TPCWAW - ROCK EXCAVATION																
TPCWAW - ROCK EXCAVATION SUMMARY	1044	29-Apr-15	19-Aug-15	13												
TPCWAW - CCT RC Structure																
TPCWAW - CCT SUMMARY	944	24-Jul-15	25-Oct-15	03												
TPCWAW - Removal of Temporary Reclamation																
DURATION OF TEMP. RECLAMATION T23 (MAX=16990)	18124	11-Feb-11 A	27-Jun-16	03												
DURATION OF TEMP. RECLAMATION TPCWAW (MAX=8160)	6284	09-May-14	27-Jun-16	03												
REMOVAL OF TEMP. RECLAMATION SUMMARY	964	19-Oct-15	27-Jan-16	03												
Works for Mined Tunnel (Portion 16, 17, 18)																
(SR) Slip Road 9 Tunnel, Total L = 147m, less 13m at WP and less 5m at EP= 149m Tunnel Excav																
SR - MINED TUNNEL WORKS SUMMARY	514	19-Oct-13 A	17-Mar-15	2304												
(EB) East Bound Tunnel, L= 167m, less 7m at WP and less 1.5m at EP= 158.5m Tunnel Excav																
EB - MINED TUNNEL WORKS SUMMARY	744	19-Oct-13 A	02-Jun-15	03												
(WB) West Bound Tunnel, L = 163m, less 7m at WP and less 1.5m at EP= 144.5m Tunnel Excav																
WB - MINED TUNNEL WORKS SUMMARY	744	19-Oct-13 A	02-Jun-15	03												

Actual Level of Effort
 Remaining Level of Effort
 Milestone
 Milestone

China State Construction Engineering (HK) Ltd :
HY/2009/15 - CWB Tunnel(CBTS)
EXECUTIVE SUMMARY PROGRAMME

Prepared by William Caluza			
Date	Revision	Checked	Approved
20-Feb-14	Executive Summary Progra...	GC	KC



Activity ID	Activity Name	Orig Dur	Early Start	Early Finish	Total Float	2014			
						Jun	Jul	Aug	Sep
HK/2012/08 3-Mth Rolling Programme for Jun 2014 - Aug 2014 Rev. 1 on 24Jun14									
Dredging and Reclamation									
Marine Work Construction									
Dredging									
Dredging - Zone D									
MAR11880	Zone D - Remove existing rock armour [S8-S10]	90	16-Apr-14 A	31-Aug-14	42				
MAR11900	Zone D - dredging [R8-R10]	22	02-Dec-13 A	31-Aug-14	9				
Seawall Construction									
Seawall Construction - Zone B									
MAR21430	Zone B - WDII Box 1 temp SW - place concrete block	6	31-May-14	05-Jun-14	1700				
Seawall Construction - Zone A2									
MAR10765	Zone A2 - seawall - Type 4, 13 - fill rock mound to temp diversion channel I.L. at -1.5 mPD	18	22-Mar-14 A	08-Jun-14	1				
MAR10769	Zone A2 - seawall - form temporary rock fill to temp diversion channel I.L. at -1.5 mPD	30	31-May-14	29-Jun-14	92				
Seawall Construction - Zone D									
MAR11820	Zone D - fill rock mound for seawall 2F	4	14-Jul-14	17-Jul-14	7				
MAR11882	Zone D - pile head treatment for caisson seawall 2F	24	18-Jul-14	14-Aug-14	7				
MAR11884	Zone D - complete fabrication of Caisson Seawall 2F and ready for delivery	0		30-Jul-14*	0				
MAR11885	Zone D - deliver and Install Caisson Seawall 2F	2	15-Aug-14	16-Aug-14	8				
MAR11925	Zone D - complete fabrication of Caisson Seawall 1C and ready for delivery	0		08-Aug-14*	0				
Filling									
Filling - Zone B									
MAR11135	Zone B - Public Fill (Remaining Area) -10.0 to +4.0mPD	39	05-May-14 A	26-Jun-14	0				
MAR11140	Zone B - Sorted & Compacted Fill above MTR TWL	30	07-Apr-14 A	15-Jul-14	86				
Filling - Zone A2									
MAR20360	Zone A2 - Public Fill -4.0 to +4.0mPD (portion beside Culvert L diversion only)	25	25-May-14 A	23-Jul-14	78				
Filling - Zone A1									
MAR20400	Zone A1 - Public Fill -4.0 to +4.0mPD	22	29-May-14 A	22-Jun-14	1				
MAR20420	Zone A1 & A2 - Form rock underlayer for temp channel	28	26-Jun-14	23-Jul-14	110				
Filling - Above C4 Unit									
MAR21450	Zone above C4 Unit - Public fill above MTR TWL	30	15-Apr-14 A	15-Jul-14	150				
Works for Section Completion									
Construction									
Box Culvert La, L1 & FRP-L Construction									
Sec VI A - Box Culvert La bay 1-3 and Roadwork									
Box Culvert La Bay 1-3									
CUL10480	Sec VI A - Area 1 - Culvert L bay 1-3 - excavation and ELS installation	90	14-Mar-14 A	20-Jun-14	-59				

Data Date: 31-May-14	<ul style="list-style-type: none"> Current Milestone Actual Work Critical Remaining Work Remaining Work Remaining Level of Effort
-------------------------	---

3 - Months Rolling Programme (June 2014 to August 2014)
For Zone Non-CRIII Works

Date	Revision	Checked	Approved
31-May-14			



Activity ID	Activity Name	Orig Dur	Early Start	Early Finish	Total Float	2014			
						Jun	Jul	Aug	Sep
CUL10520	Sec VI A - Area 1 - Culvert L bay 1-3 - construct bay 3 - base slab	11	21-Jun-14	04-Jul-14	-59	[Red bar from 21-Jun to 04-Jul]			
CUL10540	Sec VI A - Area 1 - Culvert L bay 1-3 - construct bay 3 - wall	9	05-Jul-14	15-Jul-14	-59	[Red bar from 05-Jul to 15-Jul]			
CUL10560	Sec VI A - Area 1 - Culvert L bay 1-3 - construct bay 3 - top slab	8	31-May-14	10-Jun-14	-25	[Red bar from 31-May to 10-Jun]			
CUL10600	Sec VI A - Area 1 - Culvert L bay 1-3 - construct bay 2 - base slab	11	09-Jul-14	21-Jul-14	-59	[Red bar from 09-Jul to 21-Jul]			
CUL10620	Sec VI A - Area 1 - Culvert L bay 1-3 - construct bay 2 - wall	9	22-Jul-14	31-Jul-14	-59	[Red bar from 22-Jul to 31-Jul]			
CUL10640	Sec VI A - Area 1 - Culvert L bay 1-3 - construct bay 2 - top slab	8	01-Aug-14	09-Aug-14	-39	[Red bar from 01-Aug to 09-Aug]			
CUL10660	Sec VI A - Area 1 - Culvert L bay 1-3 - construct bay 1 - base slab	16	25-Jul-14	12-Aug-14	-59	[Red bar from 25-Jul to 12-Aug]			
CUL10680	Sec VI A - Area 1 - Culvert L bay 1-3 - construct bay 1 - wall	18	13-Aug-14	02-Sep-14	-59	[Red bar from 13-Aug to 02-Sep]			
CUL12040	Sec VI A - Area 1 - 9M completion of Kiosk reinstatement	0		01-Aug-14*	0	[Blue dot at 01-Aug]			
Sec VI C - Box Culvert La bay 4 and Roadwork									
CUL11570	Sec VI C - Culvert L - bay 4 - sheetpile, ELS & Excavation	45	06-Jan-14 A	15-Aug-14	69	[Green bar from 06-Jan to 15-Aug]			
Box Culvert L1 & FRP-L - Bay 5 to 7									
CUL10010	Drainage Impact Assessment for ex. box culvert L diversion - Eng, DSD comment and approve	60	22-Jul-13 A	25-Jun-14	0	[Red bar from 22-Jul to 25-Jun]			
CUL10015	Culvert L - form temp opening at existing box culvert bay 4 for temp flow diversion	35	31-May-14	12-Jul-14	99	[Green bar from 31-May to 12-Jul]			
CUL10215	Sec VI C - Culvert L - bay 5,6,7 - Design of Temp Platform for Predrill & Piling Works	12	14-Jun-14	27-Jun-14	0	[Red bar from 14-Jun to 27-Jun]			
CUL10218	Sec VI C - Culvert L - bay 5,6,7 - Engineer's comment and approve of Temp Platform for Predrill & Piling Works	28	28-Jun-14	31-Jul-14	0	[Red bar from 28-Jun to 31-Jul]			
CUL10225	Sec VI C - Culvert L - bay 5,6,7 - Erect Temp Platform for Predrill & Piling Works	75	01-Aug-14	30-Oct-14	0	[Red bar from 01-Aug to 30-Oct]			
CUL10860	Sec VI C - Culvert L - bay 5-7 - pile loading test	0	14-Jul-14	14-Jul-14	99	[Green bar at 14-Jul]			
CUL10880	Sec VI C - Culvert L - bay 5-7 - install sheetpile	10	14-Jul-14	24-Jul-14	99	[Green bar from 14-Jul to 24-Jul]			
CUL10900	Sec VI C - Culvert L - bay 5-7 - excavation & ELS	26	25-Jul-14	23-Aug-14	99	[Green bar from 25-Jul to 23-Aug]			
CUL10940	Sec VI C - Culvert L - bay 5 - pile head treatment and construct pile cap	10	18-Aug-14	28-Aug-14	99	[Green bar from 18-Aug to 28-Aug]			
CUL11020	Sec VI C - Culvert L - bay 6 - pile head treatment and construct pile cap	10	29-Aug-14	10-Sep-14	99	[Green bar from 29-Aug to 10-Sep]			
Section II - MVB Structure									
Section II - MVB Substructure - Design, Submission and Approval									
SII10180	Sec II - MVB - MS for pumping test - prepare and submit to ICE	2	02-Aug-14	03-Aug-14	97	[Green bar at 02-Aug]			
SII10200	Sec II - MVB - MS for pumping test - ICE check & issue cert	14	04-Aug-14	17-Aug-14	97	[Green bar from 04-Aug to 17-Aug]			
SII10220	Sec II - MVB - MS for pumping test - Eng comment and approve	28	18-Aug-14	14-Sep-14	97	[Green bar from 18-Aug to 14-Sep]			
SII10240	Sec II - MVB - MS & temp work design for bulk exc & ELS - prepare and submit to ICE	60	22-Apr-14 A	18-Jun-14	69	[Green bar from 22-Apr to 18-Jun]			
SII10260	Sec II - MVB - MS & temp work design for bulk exc & ELS - ICE check & issue cert	14	19-Jun-14	02-Jul-14	69	[Green bar from 19-Jun to 02-Jul]			
SII10280	Sec II - MVB - MS & temp work design for bulk exc & ELS - Eng comment and approve	28	03-Jul-14	30-Jul-14	69	[Green bar from 03-Jul to 30-Jul]			
SII12321	Sec II - MVB - Temp work design for bulk exc & ELS - Prepare tender and sub-contract	120	31-Jul-14	27-Nov-14	69	[Green bar from 31-Jul to 27-Nov]			
MVB Substructure - Diaphragm Wall and Sheetpile Wall									
SII10440	Sec II - MVB - predrilling and ground pretreatment for Dwall	158	17-Mar-14 A	24-Sep-14	21	[Green bar from 17-Mar to 24-Sep]			
SII10460	Sec II - MVB A - construct guide wall [P1-P13, P33-P41]	177	12-Apr-14 A	20-Nov-14	4	[Green bar from 12-Apr to 20-Nov]			
SII10480	Sec II - MVB A - construct Dwall [P1-P13, P33-P41] (1.5m thk on rock)	177	28-May-14 A	16-Dec-14	1	[Green bar from 28-May to 16-Dec]			
SII10520	Sec II - MVB B - construct guide wall [P14-P32]	177	07-Apr-14 A	21-Nov-14	0	[Red bar from 07-Apr to 21-Nov]			
SII10540	Sec II - MVB B - construct Dwall [P14-P32] (1.5m thk on rock)	187	16-Apr-14 A	05-Dec-14	0	[Red bar from 16-Apr to 05-Dec]			
SII10560	Sec II - MVB B - contact grout / fissure grout / install pumping well	90	15-Aug-14	01-Dec-14	17	[Green bar from 15-Aug to 01-Dec]			
SII10590	Sec II - MVB A&B - grout curtain and fissure grout	135	12-Jul-14	19-Dec-14	4	[Green bar from 12-Jul to 19-Dec]			
MVB Substructure - Diaphragm Wall - Construction Sequences									
Group 1									



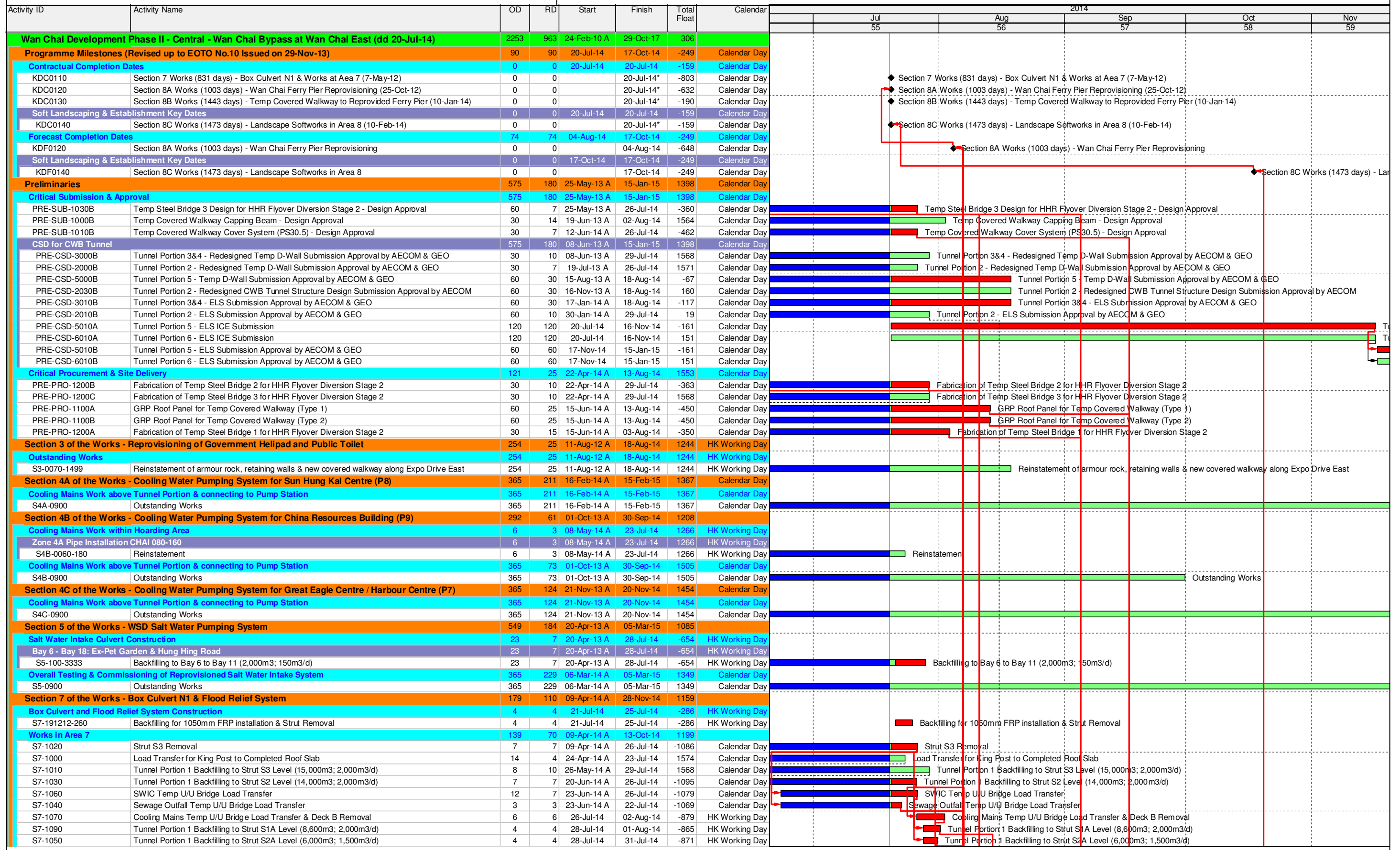
Activity ID	Activity Name	Orig Dur	Early Start	Early Finish	Total Float	2014			
						Jun	Jul	Aug	Sep
SII-10110	Sec II - MVB - Dwall P19	13	26-May-14 A	20-Jun-14	8				
SII-10120	Sec II - MVB - Dwall P17	25	21-Jun-14	21-Jul-14	8				
SII-10140	Sec II - MVB - Dwall P28	26	08-Jul-14	06-Aug-14	8				
SII-10150	Sec II - MVB - Dwall P18	23	25-Jul-14	20-Aug-14	8				
SII-10160	Sec II - MVB - Dwall P27	20	12-Aug-14	03-Sep-14	8				
SII-10170	Sec II - MVB - Dwall P22	22	26-Aug-14	20-Sep-14	8				
Group 2									
SII-10230	Sec II - MVB - Dwall P30	12	19-May-14 A	31-May-14	11				
SII-10240	Sec II - MVB - Dwall P29	20	09-Jun-14	02-Jul-14	11				
SII-10250	Sec II - MVB - Dwall P20	22	23-Jun-14	18-Jul-14	11				
SII-10260	Sec II - MVB - Dwall P13	22	07-Jul-14	31-Jul-14	11				
SII-10270	Sec II - MVB - Dwall P21	29	23-Jul-14	25-Aug-14	11				
SII-10280	Sec II - MVB - Dwall P16	25	12-Aug-14	10-Sep-14	11				
SII-10290	Sec II - MVB - Dwall P26	30	26-Aug-14	30-Sep-14	11				
Group 3									
SII-10330	Sec II - MVB - Dwall P37	23	28-May-14 A	24-Jun-14	19				
SII-10340	Sec II - MVB - Dwall P01	19	10-Jun-14	02-Jul-14	19				
SII-10350	Sec II - MVB - Dwall P11	21	26-Jun-14	21-Jul-14	19				
SII-10360	Sec II - MVB - Dwall P36	21	05-Jul-14	29-Jul-14	19				
SII-10370	Sec II - MVB - Dwall P02	19	14-Jul-14	04-Aug-14	19				
SII-10380	Sec II - MVB - Dwall P10	20	21-Jul-14	12-Aug-14	19				
SII-10390	Sec II - MVB - Dwall P39	20	28-Jul-14	19-Aug-14	19				
SII-10400	Sec II - MVB - Dwall P03	24	05-Aug-14	01-Sep-14	19				
SII-10410	Sec II - MVB - Dwall P09	21	14-Aug-14	06-Sep-14	19				
SII-10510	Sec II - MVB - Dwall P40	20	23-Aug-14	16-Sep-14	19				
MVB Substructure - Bored Pile and Prebored H-Pile									
SII10300	Sec II - MVB A&B - Bored Pile plant mobilisation	12	23-Jun-14	07-Jul-14	1				
SII10320	Sec II - MVB A&B - Predrilling for bored pile	90	23-Jun-14	09-Oct-14	38				
SII10340	Sec II - MVB A&B - Construct bored piles	148	26-Jun-14	19-Dec-14	1				
MVB Substructure - Bored Pile - Construction Sequences									
Group 1									
SII-11000	Ssec II - MVB - Bored Pile BC1-A	18	26-Jun-14	17-Jul-14	41				
SII-11020	Ssec II - MVB - Bored Pile BC2-A	18	18-Jul-14	07-Aug-14	41				
SII-11030	Ssec II - MVB - Bored Pile BC1-B	18	08-Aug-14	28-Aug-14	41				
SII-11040	Ssec II - MVB - Bored Pile BC8	18	29-Aug-14	19-Sep-14	41				
Group 2									
SII-11090	Ssec II - MVB - Bored Pile BC2-B	18	07-Jul-14	26-Jul-14	44				
SII-11100	Ssec II - MVB - Bored Pile BC3-A	18	28-Jul-14	16-Aug-14	45				
SII-11110	Ssec II - MVB - Bored Pile BC14	18	18-Aug-14	06-Sep-14	45				
Group 3									
SII-11160	Ssec II - MVB - Bored Pile BC4-A	18	11-Jul-14	31-Jul-14	44				



Activity ID	Activity Name	Orig Dur	Early Start	Early Finish	Total Float	2014			
						Jun	Jul	Aug	Sep
SII-11170	Ssec II - MVB - Bored Pile BC11	18	01-Aug-14	21-Aug-14	44				
SII-11180	Ssec II - MVB - Bored Pile BC4-B	18	22-Aug-14	12-Sep-14	44				
Section II A - CWB Tunnel & Slip Road Structures and Facilities									
Section II A - CWB Tunnel - Design, Submission and Approval									
SIIA10420	CWB Tunnel - MS for DWall Construction - prepare & submit to ICE	30	01-Aug-13 A	31-May-14	91				
SIIA10480	CWB Tunnel - MS & temp work design for bulk exc & ELS - prepare & submit to ICE	80	01-Aug-14	19-Oct-14	29				
CWB CRIII & A1									
CWB CRIII & A1 - Dwall and Pile Construction									
SIIA11060	Sec II A - CWB A1 - predrilling for Dwall and piles	30	26-Jun-14	31-Jul-14	2				
SIIA11080	Sec II A - CWB A1 - carry out ground pretreatment for Dwall	80	04-Jul-14	08-Oct-14	2				
SIIA11100	Sec II A - CWB A1 - construct Guide Wall	46	08-Jul-14	29-Aug-14	2				
SIIA11120	Sec II A - CWB A1 - construct temporary DWall and temp bulk head wall	70	11-Jul-14	03-Oct-14	2				
SIIA11140	Sec II A - CWB A1 - Construct pre-bored H-pile	65	25-Jul-14	11-Oct-14	2				
SIIA11180	Sec II A - CWB A1 - D-wall grout curtain / contact grout	90	19-Jun-14	06-Oct-14	7				
SIIA11220	Sec II A - CWB A1 - D-wall Sonic test / interface core	90	19-Jun-14	06-Oct-14	7				
SIIA11240	Sec II A - CWB A1 - install dewater/ recharge / observation well	90	19-Jun-14	06-Oct-14	7				
Section VI A - Area 1 & 2 - Lung King Street									
Roadwork & Utilities									
SVIA10040	Sec VI A - Area 1 - Summary of Box Culvert La Construction	136	11-Nov-13 A	22-Nov-14	-56				
Section VI B - Area 8									
Area 8 - Demolish Ex. Cooling Water Pumping Station									
SVIB10020	MS of cooling water pump station demolition - ICE check and issue check cert	14	22-Feb-14 A	04-Jun-14	1				
SVIB10040	MS of cooling water pump station demolition Works - Eng comment and approve	28	22-Feb-14 A	06-Jun-14	2				
SVIB10060	Completion of reclamation at Zone C	0		31-May-14	24				
SVIB10070	Sec VI B - site clearance, u/g utilities detection	12	07-Apr-14 A	07-Jun-14	0				
SVIB10080	Sec VI B - demolish existing air duct	20	09-Jun-14	02-Jul-14	0				
SVIB10100	Sec VI B - remove existing crane	4	03-Jul-14	07-Jul-14	0				
SVIB10120	Sec VI B - open cut excavation to expose ex. seawall and pump house	5	02-Jul-14	07-Jul-14	0				
SVIB10140	Sec VI B - demolish existing pump house (cell 1)	5	08-Jul-14	12-Jul-14	0				
SVIB10180	Sec VI B - demolish existing pump house (cell 2)	5	10-Jul-14	15-Jul-14	9				
SVIB10200	Sec VI B - demolish existing pump house (cell 3)	5	12-Jul-14	17-Jul-14	9				
SVIB10220	Sec VI B - demolish existing pump house (cell 4)	5	15-Jul-14	19-Jul-14	9				
SVIB10240	Sec VI B - demolish existing pump house (cell 5)	5	17-Jul-14	22-Jul-14	9				
SVIB10260	Sec VI B - demolish existing pump house (cell 6)	5	19-Jul-14	24-Jul-14	9				
SVIB10280	Sec VI B - demolish existing pump house (cell 7)	5	22-Jul-14	26-Jul-14	9				
SVIB10300	Sec VI B - demolish existing pump house (cell 8)	5	24-Jul-14	29-Jul-14	9				
SVIB10320	Sec VI B - demolish existing pump house (cell 9)	5	26-Jul-14	31-Jul-14	9				
SVIB10340	Sec VI B - demolish existing pump house (cell 10)	5	01-Aug-14	06-Aug-14	9				
SVIB10360	Sec VI B - fill up void inside existing pump house (cell 1)	2	14-Jul-14	15-Jul-14	0				
SVIB10380	Sec VI B - fill up void inside existing pump house (cell 2)	2	16-Jul-14	17-Jul-14	12				
SVIB10400	Sec VI B - fill up void inside existing pump house (cell 3)	2	18-Jul-14	19-Jul-14	12				



Activity ID	Activity Name	Orig Dur	Early Start	Early Finish	Total Float	2014			
						Jun	Jul	Aug	Sep
SVIB10420	Sec VI B - fill up void inside existing pump house (cell 4)	2	21-Jul-14	22-Jul-14	12				
SVIB10440	Sec VI B - fill up void inside existing pump house (cell 5)	2	23-Jul-14	24-Jul-14	12				
SVIB10460	Sec VI B - fill up void inside existing pump house (cell 6)	2	25-Jul-14	26-Jul-14	12				
SVIB10480	Sec VI B - fill up void inside existing pump house (cell 7)	2	28-Jul-14	29-Jul-14	12				
SVIB10500	Sec VI B - fill up void inside existing pump house (cell 8)	2	30-Jul-14	31-Jul-14	12				
SVIB10520	Sec VI B - fill up void inside existing pump house (cell 9)	2	01-Aug-14	02-Aug-14	12				
SVIB10540	Sec VI B - fill up void inside existing pump house (cell 10)	2	07-Aug-14	08-Aug-14	9				
SVIB10560	Sec VI B - demolish existing seawall coping	11	16-Jul-14	28-Jul-14	0				
SVIB10580	Sec VI B - trim down existing seawall	33	23-Jul-14	29-Aug-14	0				
SVIB10600	Sec VI B - backfill and compaction to formation level	14	20-Aug-14	04-Sep-14	0				
Section VI C - Area 3, 6, 8A & 8C									
Area 8A & 8C - Seawall Modification (Reviewed)									
Design Submission & Approval									
PRS-1004	Sec VI C - Temp Work Design for Seawall Modification & MTR Pump Room Stabilization - Engineer / MTR comment and approve	28	02-Apr-14 A	19-Jun-14	95				
Tenders for Sub-contractor and Procurement									
PCU60310	Sec VI C - Prepare Sub-contract for Seawall Modification and Procurement of Materials	90	14-Nov-13 A	08-Aug-14	12				
PCU60320	Sec VI C - Assessment and Award of Sub-contract for Seawall Modification	28	09-Aug-14	05-Sep-14	12				
Area 3 - Box Culvert bay 4 and Roadwork									
SVIC10220	Sec VI C - [Summary] Construct Box Culvert Bay 4	116	06-Jan-14 A	06-Dec-14	107				
Section VI D - Area 8B & 10									
WDII Box 1 Construction (Reviewed)									
WDII Box 1 Submission and Approval / Material Procurement									
PCU60410	Sec VI D - WD II Box 1 - Prepare Subcontract for Box 1 structure	90	26-May-14 A	28-Aug-14	69				
S0721040	Sec VI D - WD II Box 1 - temp work design - ICE check and issue check cert	28	31-May-14	27-Jun-14	1678				
S0721060	Sec VI D - WD II Box 1 - temp work design - Engineer comment and approve	28	19-May-14 A	18-Jun-14	55				
S0721070	Sec VI D - WD II Box 1 - method statement and temp work design - MTR comment and approve	52	19-Jun-14	09-Aug-14	88				
S0721080	Sec VI D - WD II Box 1 - Prepare and submit method statement	28	19-Jun-14	16-Jul-14	55				
S0721090	Sec VI D - WD II Box 1 - method statement - Engineer comment and approve	28	17-Jul-14	13-Aug-14	55				
Pile Head Treatment and Dry Dock									
WD-C3030	Sec VI D - form dry dock	65	15-Aug-14	01-Nov-14	44				
Section VIII - Landscape Softworks									
Soft Landscaping Works									
SVIII10020	Sec VIII - Tree Felling/Transplanting at Portion 2 & 2A	90	20-Nov-13 A	24-Jun-14	305				
Section X - Protection & Preservation of Trees									
Soft Landscaping Works									
SX10020	Sec X - Protection & Preservation of Trees	1632	31-Jan-13 A	20-Jul-17	0				



俊和 - 中國中鐵聯營
 CHUN WO - CRGL JOINT VENTURE

█ Remaining Work █ Summ...
█ Actual Work
█ Summary Bar
◆ Critical Remaining Work
◆ Milestone

CEDD CONTRACT NO. HK/2009/02
Wan Chai Development Phase II - Central-Wan Chai Bypass at Wan Chai East (Contract 2)
3-MONTH ROLLING PROGRAMME (Data Date on:20-Jul-14)

Date	Revision	Checked	Approved
20-Jul-14	3MRP		
20-Feb-14	Baseline Prog		

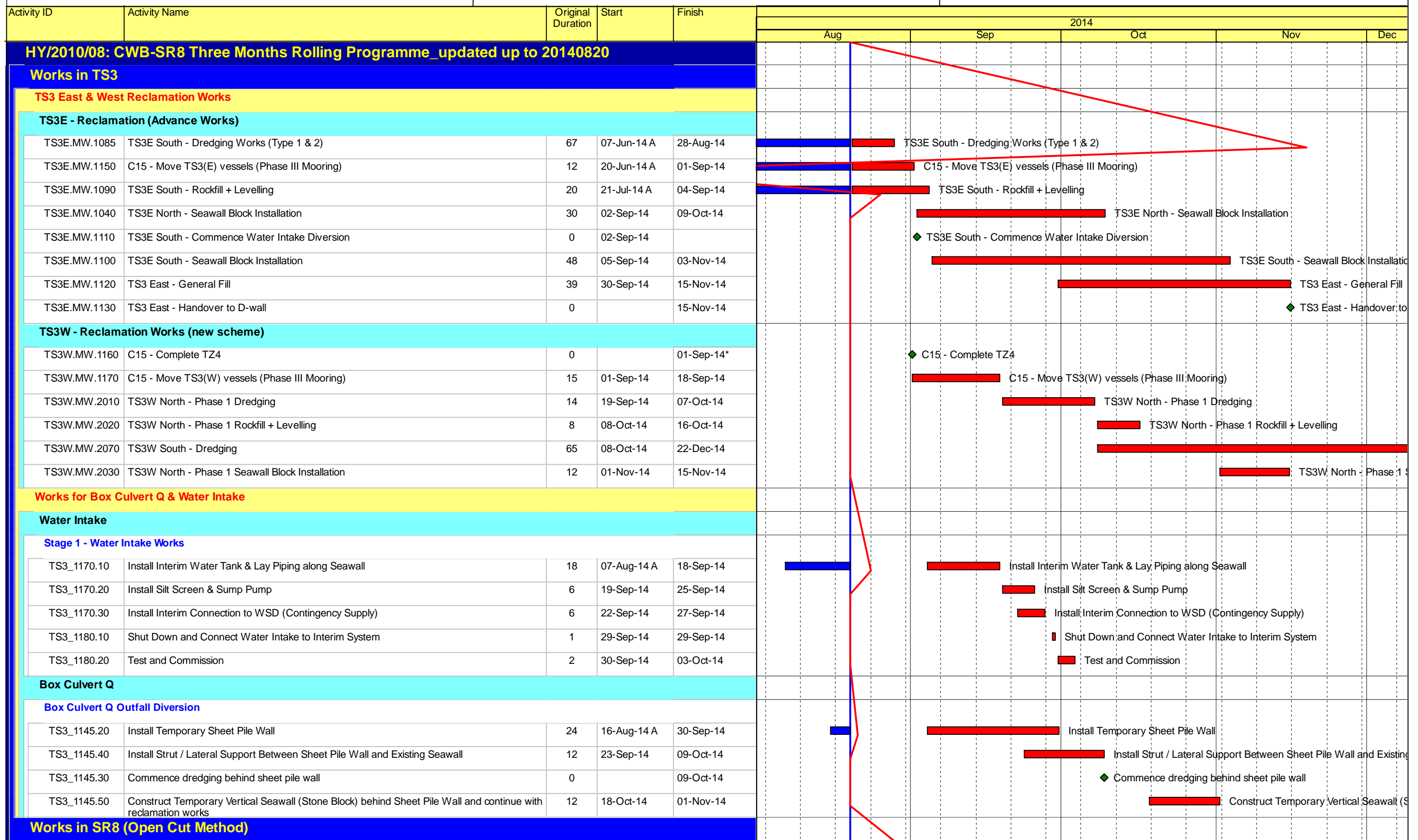
Activity ID	Activity Name	OD	RD	Start	Finish	Total Float	Calendar	2014					
								Jul	Aug	Sep	Oct	Nov	
								55	56	57	58	59	
SUM-CWB-50000	Paving Block Installation (Whole Newly Reclaimed Area)	1142	1142	13-Sep-14	29-Oct-17	-428	Calendar Day						
	Reprovisioning of Existing Facilities (Section 3, 4A, 4B, 4C, 5, 6, 7, 8A & 8B)	872	292	17-Dec-12 A	07-May-15	-356	Calendar Day						
	Reprovisioning of Box Culvert N (Section 7)	250	250	30-Aug-14	07-May-15	-1095	Calendar Day						
SUM-FAC-52000	VO116 - New Transformer Building to Ferry Pier	250	250	30-Aug-14	07-May-15	-1095	Calendar Day						
	Reprovisioning of Wan Chai Ferry Pier & Covered Walkway (Section 8A & 8B)	463	128	17-Dec-12 A	24-Nov-14	-192	Calendar Day						
SUM-FAC-62000	Ferry Pier ABWF Works	155	10	17-Dec-12 A	29-Jul-14	-74	Calendar Day						
SUM-FAC-65000	ABWF Works on Observation Deck under Section 8B	150	30	07-May-13 A	18-Aug-14	-220	Calendar Day						
SUM-FAC-66000	Temp Covered Walkway	217	128	10-Aug-13 A	24-Nov-14	-486	Calendar Day						



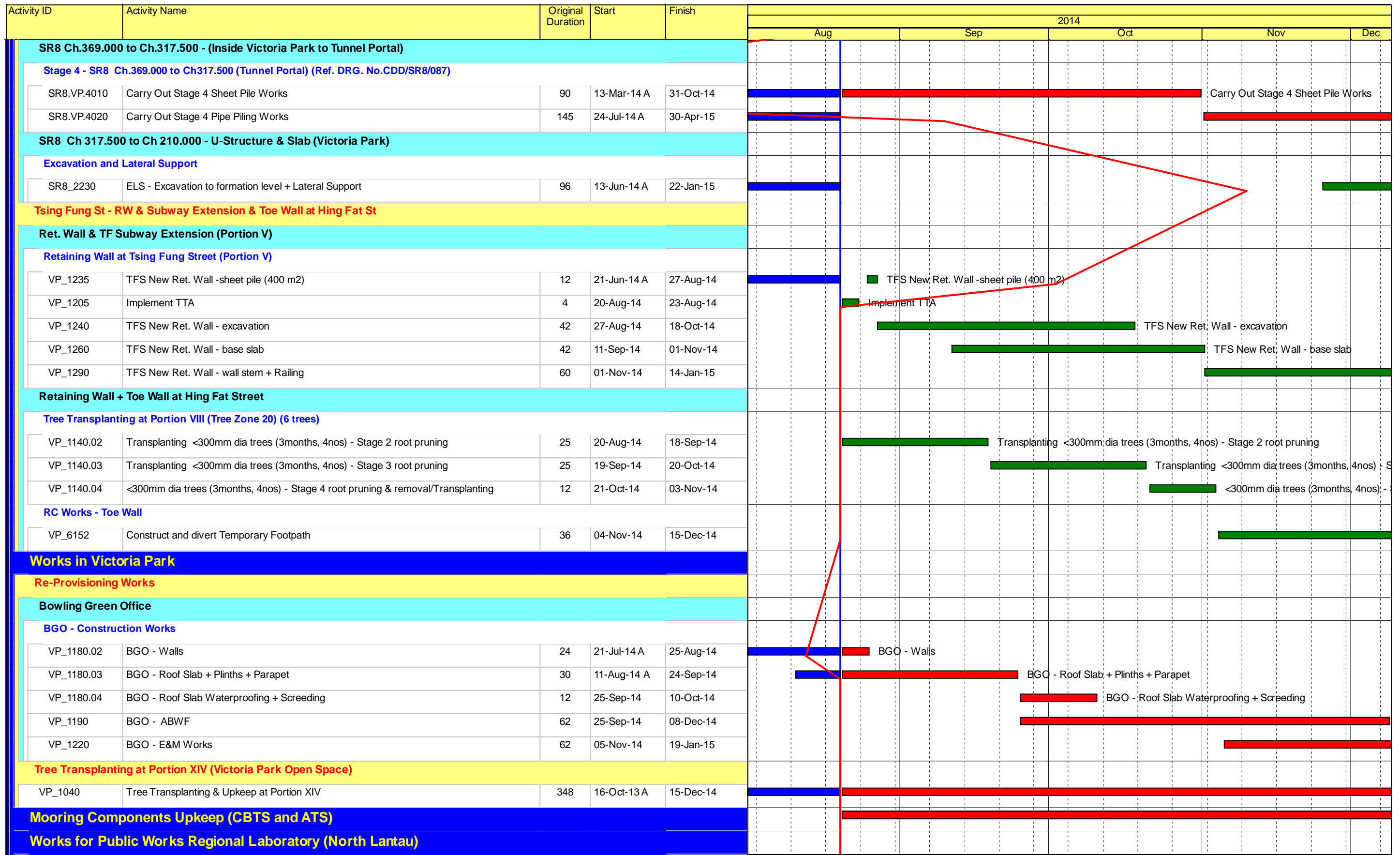
	Remaining Work		Summ...
	Actual Work		
	Summary Bar		
	Critical Remaining Work		
	Milestone		

CEDD CONTRACT NO. HK/2009/02
Wan Chai Development Phase II - Central-Wan Chai Bypass at
Wan Chai East (Contract 2)
3-MONTH ROLLING PROGRAMME (Data Date on:20-Jul-14)

Date	Revision	Checked	Approved
20-Jul-14	3MRP		
20-Feb-14	Baseline Prog		



Activity ID	Activity Name	Original Duration	Start	Finish	2014					
					Aug	Sep	Oct	Nov	Dec	
SR8 - Cofferdam & Cut & Cover Tunnel Works										
SR8 East Bound - (Seaside to Victoria Road / IEC Central Divider)										
Method Statement										
ELS										
SR8_2260	ELS Method statement - submission	24	31-Jul-15 A	17-Jul-15						
TTA Stage 0 - East Bound										
Stage 1B - East Bound (Seaside) (Ref. DRG. No.CDD/SR8/082)										
SR8.EB.1270	UU diversion	24	23-May-14 A	28-Aug-14	■					
SR8.EB.1250	Install King Post for Traffic Deck (8 nos.)	16	25-Jun-14 A	19-Aug-14 A	■					
SR8.EB.1255	Carry-out Stage 1B TAM Grout	21	08-Aug-14 A	30-Aug-14	■					
SR8.EB.1260	Jet Grout	12	29-Aug-14	12-Sep-14		■				
Traffic Deck and Temporary Road										
SR8.EB.1280	Footing	13	20-Aug-14*	03-Sep-14		■				
SR8.EB.1275	Road Works	19	20-Aug-14	11-Sep-14		■				
SR8.EB.1265	Steel Works	11	06-Sep-14	19-Sep-14			■			
SR8.EB.1285	Traffic Directional Signs	1	20-Sep-14	20-Sep-14				■		
TTA Stage 1 - East Bound										
Stage 2 - East Bound (Ref. DRG. No.CDD/SR8/083)										
SR8.EB.1310	Implement TTA Stage 1 - Traffic Diversion at East Bound (DRG Ref. 4843/011/021E)	0	21-Sep-14*					◆		
SR8.EB.1315	Excavate Trench and Expose underground utilities (Carriage way)	8	22-Sep-14	30-Sep-14			■			
SR8.EB.1325	Protect and Shift HV 22kv Cable on carriage way (as required)	18	03-Oct-14	23-Oct-14			■			
SR8.EB.1327	Cut and By pass Drainage to the next (existing) collection point (MH)	18	03-Oct-14	23-Oct-14			■			
SR8.EB.1330	Carry out pre-boring work for stage 2 sheet pile	23	24-Oct-14	19-Nov-14				■		
SR8.EB.1340	Stage 2 - Sheet Pile Work	18	13-Nov-14	03-Dec-14					■	
SR8 West Bound - Ch. 369.000 to 495.000 (Victoria Road / IEC Central Divider)										
TTA Stage 1 - West Bound										
Stage 2A - West Bound (Ref. DRG. No.CDD/SR8/086)										
SR8.WB.2020	Carry out Stage 2A Sheet Pile Work	17	07-Jul-14 A	21-Aug-14	■					
SR8.WB.2030	Carry out Stage 2A Pipe Piling Work	56	20-Aug-14	27-Oct-14		■				
SR8.WB.2040	Carry out Stage 2A TAM Grout	12	28-Oct-14	10-Nov-14				■		
SR8.WB.2050	Trim Down Sheet Pile / Pipe Pile and construct Gas Main Trough	8	28-Oct-14	05-Nov-14				■		
SR8.WB.2060	Divert Gas Main to Gas Main Trough	8	06-Nov-14	14-Nov-14				■		
Stage 2B - West Bound (Ref. DRG. No.CDD/SR8/086)										
SR8.WB.2070	Carry out Stage 2B Sheet Pile	6	15-Nov-14	21-Nov-14					■	
SR8.WB.2080	Carry out Stage 2B Pipe Piling	12	22-Nov-14	05-Dec-14					■	



Activity ID	Activity Name	Original Duration	Start	Finish	2014												
					Aug			Sep			Oct			Nov			Dec
Maintenance and Upkeep of New PWRL (Portion XVII)																	
PWRL_1050	Maintenance/ Upkeep of New PWRL	1301	19-Jul-13 A	20-Nov-17													